



# Lawrence Symphony Orchestra

## Double Bass Auditions 2026

1. Sight reading
2. Brahms Symphony No. 1, first movement, measures 161-189
3. Brahms Symphony No. 1, first movement, measures 335-352
4. Brahms Symphony No. 1, fourth movement, measures 94-115
5. Saint-Saens Carnival of the Animals, *L'Eléphant*, measure 5 to the end

# Symphony No. 1

## Movement 1

Johannes Brahms

161 **E**

*ff* *D* *G* *sf* *sf*

168

*D* *ff*

175

*ff*

182

*ff*

187

*ff*

229 **G**

*f* *D* *ff* *G*

235

*D* *ff*

335

*D* *ff*

339 **L**

*ff* **3**

347

*f* *ff*

*p*

Movement 4

**Allegro non troppo, ma con brio**

94

*ff animato* *sf* *sf* *sf* *D*

99

*sf* *sf* *sf* *A*

104

*f*

109

*fp* **E**

112

*fp* *pizz.*

Saint-Saens — Carnival of the Animals

2

CONTREBASSE

N° 2

Poules et Coqs

Allegro moderato

34



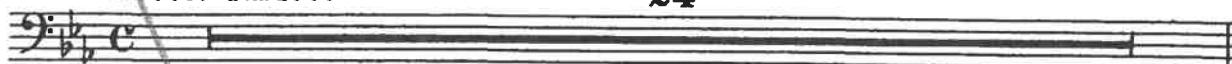
N° 3

Hémiones

(Animaux véloces)

Presto furioso

24



N° 4

Tortues

Andante maestoso

1<sup>er</sup> Piano

C. BASSE



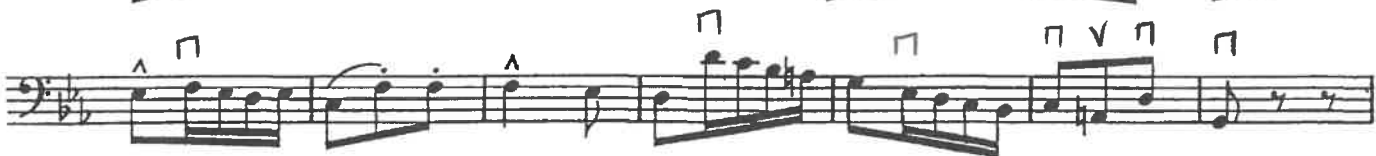
N° 5

L'Éléphant

Allegretto pomposo

2<sup>d</sup> Piano

C. BASSE SOLI



Saint-Saens — Carnival of the Animals

CONTREBASSE

3

Musical score for Contrabass, measures 1-5. The score is in bass clef with a key signature of two flats (B-flat and E-flat). It features various musical notations including accents, slurs, and dynamic markings such as *mf*, *f*, and *ff*. Measure numbers 2, 3, and 4 are enclosed in boxes. The piece concludes with a double bar line and repeat dots.

N° 6

Kangourous

Moderato

Musical score for Kangourous, measures 1-5. The score is in bass clef with a key signature of two flats. It consists of a series of rhythmic patterns, including triplets and a quintuplet, indicated by measure numbers 3, 1, 3, 3, 2, 5, and 3. The piece ends with a fermata.

N° 7

Aquarium

Andantino

39

Musical score for Aquarium, measures 1-39. The score is in bass clef with a key signature of two flats. It consists of a single, long, sustained note with a fermata at the end.

N° 8

Personnages à longues oreilles

Tempo ad lib

24

Musical score for Personnages à longues oreilles, measures 1-24. The score is in bass clef with a key signature of two flats. It consists of a single, long, sustained note with a fermata at the end.

N° 9

Le Coucou au fond des bois

Andante

42

Musical score for Le Coucou au fond des bois, measures 1-42. The score is in bass clef with a key signature of three sharps (F#, C#, G#). It consists of a single, long, sustained note with a fermata at the end.