

# Graduation Rates Disaggregated by Sex

<i>Number of First-time, Full-time, Certificate- or Degree-Seeking, First Year Students</i>	Cohorts entering in fall of:												
	2003	2004	2005	2006	2007	2008	2009	2010	2011	2012	2013	2014	2015
Female	184	192	216	186	183	219	178	235	171	225	213	204	227
Male	162	148	178	175	164	154	170	210	152	180	179	176	167
Total Original Cohort	346	340	394	361	347	373	348	445	323	405	392	380	394
Total Allowable Exclusions	1	1	3	0	2	0	0	0	0	1	1	1	0
Adjusted Cohort	345	339	391	361	345	373	348	445	323	404	391	379	394

	Cohorts entering in fall of:												
	2003	2004	2005	2006	2007	2008	2009	2010	2011	2012	2013	2014	2015
<b>Four-Year Graduation Rate</b>													
Female	65%	64%	65%	54%	73%	72%	63%	70%	72%	68%	65%	68%	74%
Male	54%	53%	54%	54%	64%	58%	64%	58%	57%	63%	59%	57%	63%
Adjusted Cohort	60%	59%	60%	54%	69%	66%	63%	64%	65%	66%	62%	63%	69%
<b>Five-Year Graduation Rate</b>													
Female	80%	74%	80%	67%	84%	82%	74%	80%	85%	83%	79%	81%	82%
Male	70%	68%	68%	75%	76%	71%	75%	74%	72%	75%	73%	72%	73%
Adjusted Cohort	75%	71%	75%	71%	80%	78%	75%	78%	79%	79%	76%	77%	78%
<b>Six-Year Graduation Rate</b>													
Female	82%	76%	83%	69%	85%	84%	75%	81%	85%	84%	80%	82%	85%
Male	70%	70%	71%	77%	78%	74%	78%	76%	73%	77%	77%	75%	74%
Adjusted Cohort	77%	73%	77%	73%	82%	80%	76%	79%	80%	81%	79%	79%	80%

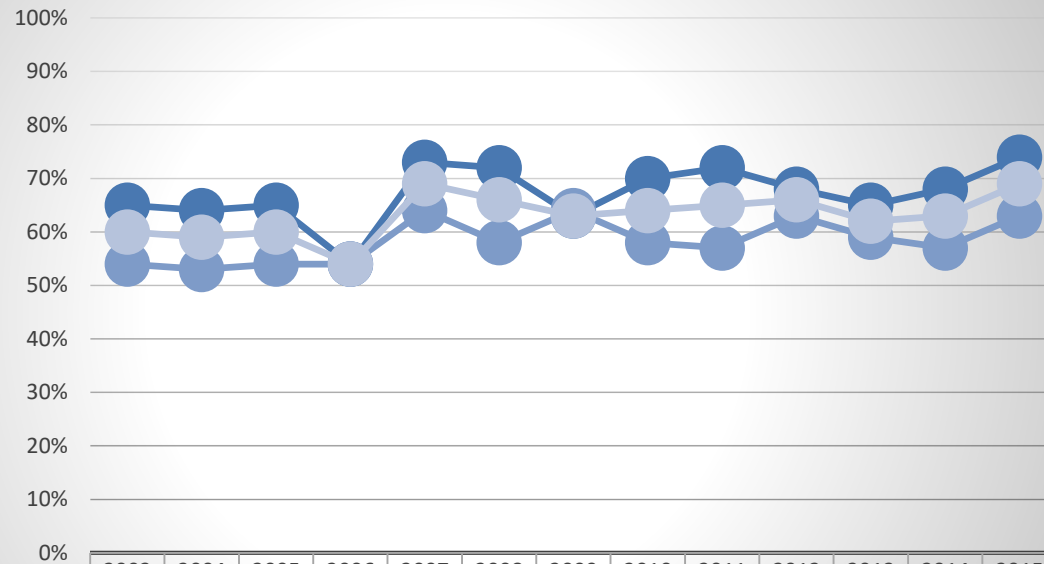
**Notes:**

- Disclosure of graduation rates in these categories is required by the Higher Education Opportunity Act of 2008.
- Cohorts represent the fall cohort of first-time, full-time, certificate- or degree-seeking, first year students. All graduation rate figures reflect the adjusted cohort after allowable exclusions.
- These data reflect retroactive allowable exclusions in the 2003 and 2012 cohorts, which are not reflected in the IPEDS Graduation Rate Surveys.

Src: IPEDS Graduation Rates Survey, updated 2/21/2022

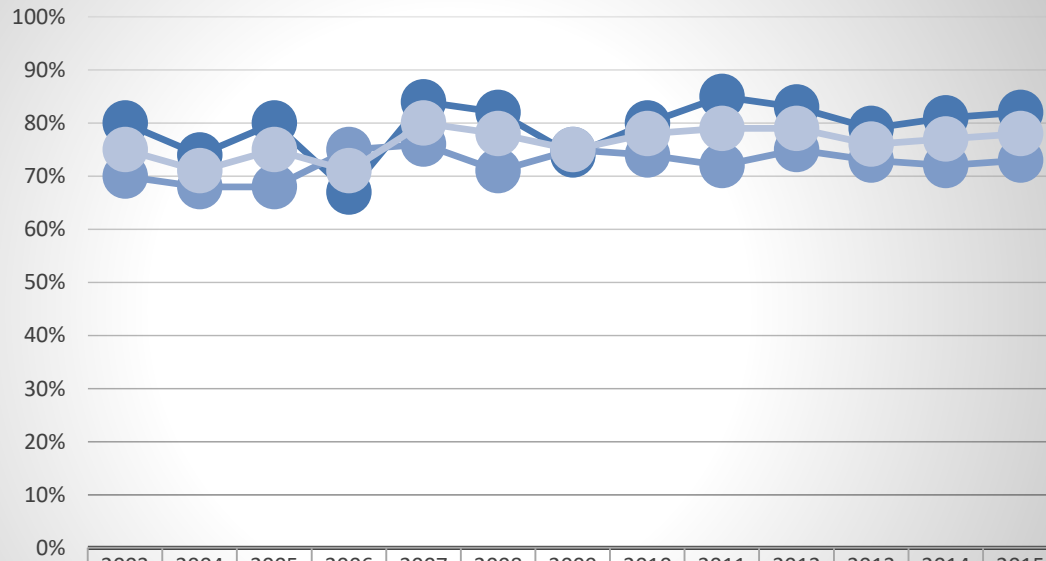


## Four-Year Graduation Rates by Sex



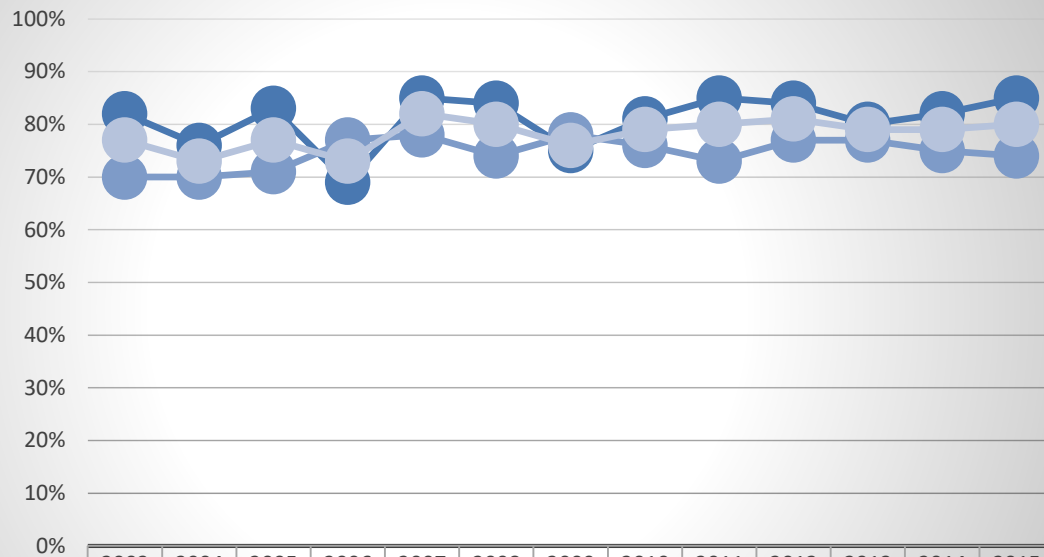
	2003	2004	2005	2006	2007	2008	2009	2010	2011	2012	2013	2014	2015
Female	65%	64%	65%	54%	73%	72%	63%	70%	72%	68%	65%	68%	74%
Male	54%	53%	54%	54%	64%	58%	64%	58%	57%	63%	59%	57%	63%
Adjusted Cohort	60%	59%	60%	54%	69%	66%	63%	64%	65%	66%	62%	63%	69%

## Five-Year Graduation Rates by Sex



	2003	2004	2005	2006	2007	2008	2009	2010	2011	2012	2013	2014	2015
Female	80%	74%	80%	67%	84%	82%	74%	80%	85%	83%	79%	81%	82%
Male	70%	68%	68%	75%	76%	71%	75%	74%	72%	75%	73%	72%	73%
Adjusted Cohort	75%	71%	75%	71%	80%	78%	75%	78%	79%	79%	76%	77%	78%

## Six-Year Graduation Rates by Sex



	2003	2004	2005	2006	2007	2008	2009	2010	2011	2012	2013	2014	2015
Female	82%	76%	83%	69%	85%	84%	75%	81%	85%	84%	80%	82%	85%
Male	70%	70%	71%	77%	78%	74%	78%	76%	73%	77%	77%	75%	74%
Adjusted Cohort	77%	73%	77%	73%	82%	80%	76%	79%	80%	81%	79%	79%	80%