

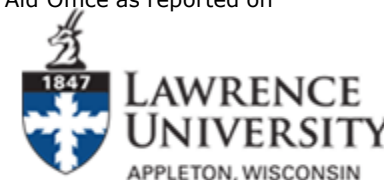
# Graduation Rates Disaggregated by Financial Aid Category

	Cohorts entering in fall of:									
	2005	2006	2007	2008	2009	2010	2011	2012	2013	2014
<b>Four-Year Graduation Rate</b>										
Received Federal Pell Grant	46%	52%	66%	59%	57%	59%	59%	56%	56%	53%
Received Subsidized Stafford Loan, No Pell Grant	57%	56%	67%	68%	61%	63%	64%	71%	61%	66%
Received Neither Pell Grant nor Stafford Loan	67%	54%	71%	67%	67%	67%	69%	68%	65%	66%
Adjusted Cohort	60%	54%	69%	66%	63%	64%	65%	66%	62%	63%
<b>Five-Year Graduation Rate</b>										
Received Federal Pell Grant	68%	65%	75%	74%	64%	72%	72%	71%	65%	70%
Received Subsidized Stafford Loan, No Pell Grant	71%	72%	77%	79%	76%	70%	81%	85%	75%	77%
Received Neither Pell Grant nor Stafford Loan	79%	72%	87%	78%	79%	83%	81%	81%	82%	80%
Adjusted Cohort	75%	71%	80%	78%	75%	78%	79%	79%	76%	77%
<b>Six-Year Graduation Rate</b>										
Received Federal Pell Grant	71%	71%	75%	76%	68%	73%	73%	72%	68%	71%
Received Subsidized Stafford Loan, No Pell Grant	74%	74%	77%	80%	77%	72%	81%	88%	78%	79%
Received Neither Pell Grant nor Stafford Loan	82%	73%	87%	80%	80%	84%	82%	81%	84%	82%
Adjusted Cohort	77%	73%	82%	80%	76%	79%	80%	81%	79%	79%

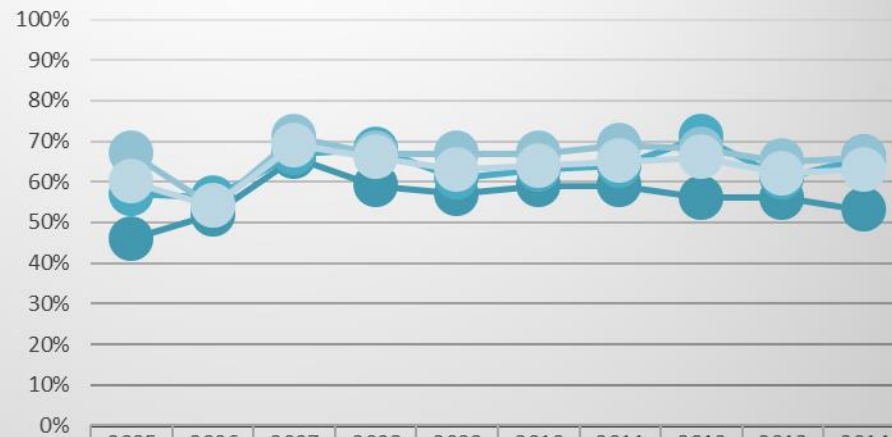
## Notes:

- Disclosure of graduation rates in these categories is required by the Higher Education Opportunity Act of 2008.
- All graduation rate figures reflect allowable adjustments to the original cohort. Cohorts may be adjusted for death, military service, missionary service, or approved international voluntary service and the student did not graduate.
- These data reflect a retroactive allowable exclusion in the 2012 cohort, which may not be reflected in the IPEDS Graduation Rate Survey.
- A recipient is defined as anyone who receives and uses these awards anytime within their first year.
- Students who receive neither subsidized Stafford loans nor Pell Grants may have received other financial aid, or no aid.

Src: Office of Research Administration as reported on IPEDS Graduation Rates Survey and the Common Data Set; Financial Aid Office as reported on U.S. News and World Report Main Survey & updated 3/11/21

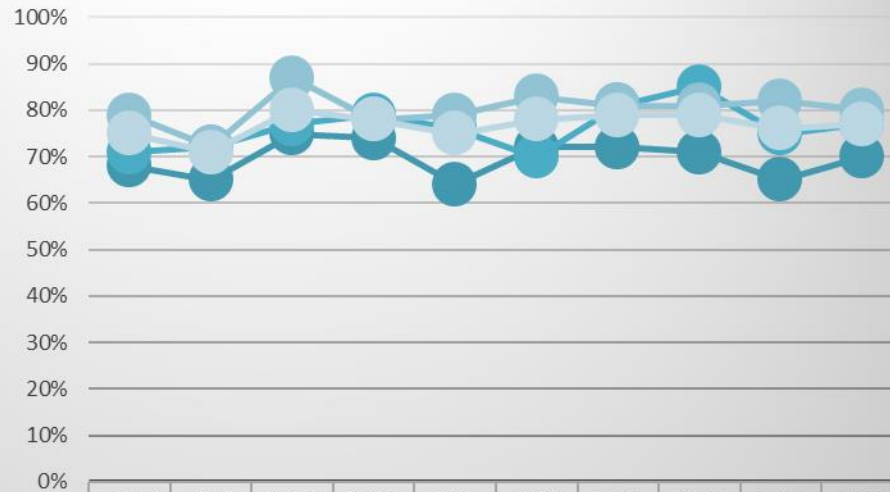


## Four-Year Graduation Rates by Financial Aid Category



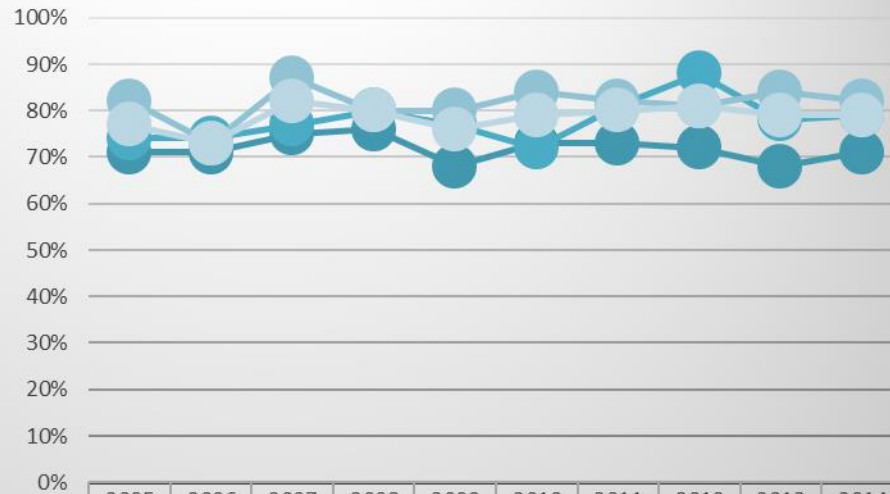
	2005	2006	2007	2008	2009	2010	2011	2012	2013	2014
Received Federal Pell Grant	46%	52%	66%	59%	57%	59%	59%	56%	56%	53%
Received Subsidized Stafford Loan, No Pell Grant	57%	56%	67%	68%	61%	63%	64%	71%	61%	66%
Received Neither Pell Grant nor Stafford Loan	67%	54%	71%	67%	67%	67%	69%	68%	65%	66%
Adjusted Cohort	60%	54%	69%	66%	63%	64%	65%	66%	62%	63%

## Five-Year Graduation Rates by Financial Aid Category



	2005	2006	2007	2008	2009	2010	2011	2012	2013	2014
Received Federal Pell Grant	68%	65%	75%	74%	64%	72%	72%	71%	65%	70%
Received Subsidized Stafford Loan, No Pell Grant	71%	72%	77%	79%	76%	70%	81%	85%	75%	77%
Received Neither Pell Grant nor Stafford Loan	79%	72%	87%	78%	79%	83%	81%	81%	82%	80%
Adjusted Cohort	75%	71%	80%	78%	75%	78%	79%	79%	76%	77%

## Six-Year Graduation Rates by Financial Aid Category



	2005	2006	2007	2008	2009	2010	2011	2012	2013	2014
Received Federal Pell Grant	71%	71%	75%	76%	68%	73%	73%	72%	68%	71%
Received Subsidized Stafford Loan, No Pell Grant	74%	74%	77%	80%	77%	72%	81%	88%	78%	79%
Received Neither Pell Grant nor Stafford Loan	82%	73%	87%	80%	80%	84%	82%	81%	84%	82%
Adjusted Cohort	77%	73%	82%	80%	76%	79%	80%	81%	79%	79%