



# Wriston Art Center

## NEWSLETTER

FALL 2013

ISSUE 19

### INTRODUCTION

This nineteenth edition of the Wriston Art Center Newsletter brings you news from the faculty, staff, students, and alumni of the Department of Art and Art History and the Wriston Galleries. As you will see, it has been another productive year with exceptional accomplishments.

We welcomed three new members to the department of Art and Art History. **Ben Tilghman '99**, assistant professor of art history, completed his first year teaching Medieval and Renaissance art. **Sarah Gross** will join the faculty in the fall as the newest Uihlein Fellow, teaching ceramics. **Beth Zinsli '02**, joined us in July as the director and curator of the Wriston Galleries. We look forward to working with Ben, Sarah, and Beth!

Please keep sending us updates via emails, postcards, and letters, and, if you are ever in Appleton, please stop by Wriston to say hello and catch up with us. We'd love to see you!

**Elizabeth Carlson**, *co-chair of the Department of Art and Art History*

### FACULTY AND STAFF NEWS

• **Elizabeth Carlson**, *associate professor of art history* spent four weeks this summer in Chicago at the Newberry Library as part of a National Endowment for the Humanities Summer Institute. The session titled "Making Modernism" explored Chicago as a site for modernist art and literature in the early twentieth century. The research conducted at the Newberry, and connections made with other scholars, will inform her new research that considers the influence of the 1913 Armory Show on American Midwest artists.

In August, Elizabeth shared this new research with students at Björklunden, where she taught a week-long course called "Appreciating Abstraction," which examined Expressionism and Cubism.

Last April, Elizabeth hosted and organized Bill Viola and Kira Perov's residency at Lawrence University. Viola, recognized internationally for his video art installations, delivered the convocation address and conducted a workshop with students. Connected to the event, **Christopher Zimmerman '96**, a scholar of Bill Viola's video works, came to campus and presented a three-night screening of Viola's early work titled *Video as Reception, Video as Reflection and Video as Projection*.

And lastly, but certainly not least, Elizabeth and her husband Michael welcomed their daughter Mae Elizabeth Gerwe last August.

• **Tony Conrad**, *lecturer in studio art*, exhibited his work in a number of exhibitions including *Copy.right?: the art of appropriation*, 33 Contemporary Gallery, Chicago, Illinois; *Continuum 2013: in retrospect*, PSOA Arts Center Gallery, Milwaukee, Wisconsin and *Indiana Green*, Frank Juarez Gallery, Sheboygan, Wisconsin. In January, Tony was interviewed by *Fox Cities Magazine*, which featured his studio for an article "Home is where the art is." Along with Lawrence University professors **Julie Lindemann** and **John Shimon**, Tony was selected to participate in the upcoming 2013 Wisconsin Triennial at the Madison Museum of Contemporary Art, which will feature the work of 40 contemporary Wisconsin visual artists.

Last spring in his Intermediate Drawing class, Tony worked closely with **Jennifer Krueger '13** and **Joey Astwood '13** on self-curating their two person exhibition *Society* in the Mudd Gallery. This coming academic year, Tony looks forward to teaching drawing classes as well as Senior Practicum.

Recently, Tony was selected to be a fellow for the Coleman Foundation where he will actively participate in regional conferences and meetings. As part of his appointment, Tony will be working to bring Brooklyn-based artist **Jason Rohlf** to visit Lawrence University and to work closely with his senior studio art majors on professional and entrepreneurial development.

• **Debbie Kupinsky**, *Uihlein Fellow in Studio Art/ Ceramics*. In November Debbie was part of a two person, collaborative team for the exhibition *Collection* at Siena Heights University in Adrian, Michigan, where she also gave a public lecture. Other significant exhibitions in the fall were the *2012 Resident Exhibition* at the Archie Bray Foundation for the Ceramic Arts in Helena, Montana and the *Wisconsin Triennial* in Oshkosh Wisconsin. In January she had a solo exhibition, *Echo*, at Ripon College, where she also gave a public lecture sponsored by the gallery. This spring Debbie co-curated a group exhibition, *Biota*, at the National Conference for Education in the Ceramic Arts in Houston, Texas. In addition to curating the exhibition, she was included in two other NCECA Concurrent Exhibitions, *Location* and *The Archie Bray Foundation 2012 Exhibition*.

This summer Debbie completed a collaborative residency in Alpena, Michigan with artist Craig Clifford and will be presenting a body of work based on the residency this fall at Mt. Mercy University in Cedar Rapids, Iowa. She is also preparing for the upcoming exhibition, *Wisconsin Triennial 2013*, at the Madison Museum of Contemporary Art.

This academic year installation artist **Lauren Bauman-Herzog** and ceramic artist **Geritt Grimm** gave lectures and worked with students in class.

Although Debbie has completed her tenure as Uihlein Fellow, she will be teaching Freshman Studies in both Fall and Winter terms so we look forward to seeing her around Wriston.

• **Carol Lawton**, *professor of art history and Otilia Buerger Professor of Classical Studies*. This spring Carol completed a volume on the sculpture from the excavations of the Athenian Agora, a study of all of the Greek, Hellenistic, and Roman votive reliefs found to date in the excavations, which attempts to determine the relationship of the dedications to shrines in the vicinity and to investigate what they can tell us about the popular religion in the vicinity of the Agora.

In addition to her usual courses on Greek and Roman art, this year Carol taught a tutorial on Roman Women in the Guises of Deities, and for Classics Week she organized an informal exhibition of coins from the Otilia Buerger Collection.

Carol returned to Athens this summer to continue work on two more projects, the publication of dedications to the Mother of the Gods, also from the Agora excavations, and the publication of the architectural sculpture of the Classical Temple of Hera at the Argive Heraion, in collaboration with Christopher Pfaff of Florida State University. She continues to serve on the Executive Committee of the Managing Committee of the American School of Classical Studies in Athens.

• **Julie Lindemann** and **John Shimon**, *associate professors of art*. John and Julie's ambrotype *Picking Stones*, 2012 was featured in the inaugural permanent collection installation tracing the evolution of Wisconsin visual art (April 2013-ongoing) at the new Museum of Wisconsin Art in West Bend, Wisconsin. The photograph had the distinction of being the only photographic object in the exhibition.

Collaborative solo exhibitions included: *Tom: Ten Portraits* in conjunction with the *Visiting Tom* (Harper Collins, NY, August 2012) book release and reading by author Mike Perry at Boswell Book Company, Milwaukee, Wisconsin (August-September 2012). *Decay Utopia Decay*, which featured large cyanotypes and ambrotypes exploring the rural Wisconsin landscape and mortality as part of the grand re-opening of the Portrait Society Gallery, Milwaukee (November 2012-January 2013). Several prints from the show were acquired by art museums.

John and Julie's *Wisconsin Project*, a "Connecting Communities" residency at John Michael Kohler Arts Center, Sheboygan, examined Wisconsin as place to culminate in an exhibition titled "Wisconsin Darkness and Picturesque" (October 2013-February 2014). It incorporates photographs, concrete sculptures,

assemblages, watercolors, and participatory artworks and opens on Saturday, October 19th. It will feature improvisational performances by Lawrence University faculty: **John T. Gates**, *visiting assistant professor of music and teacher of voice (voice)*, **Brian Pertl**, *Dean of the Conservatory of Music (Tibetan horn and didgeridoo)*, and **John Shimon** (guitar), all responding to *Wisconsin Death Trip* (1973), the seminal book by Michael Lesy. Their residency included conceptualizing a community exhibition titled "Wisconsin Confidential" made up of 500 original, vintage, and altered postcard submissions from around the world (October 2012-February 2013). It was followed by two community workshops altering ready-made vintage Wisconsin postcards (December 2012) to gain a deeper understanding of varying conceptions of Wisconsin as place. They also presented five summer artist talks and workshops (June-August 2013) at the Kohler, Wisconsin Concrete Park and Tellen Woodland Sculpture Garden. Two related blogs make their residency work accessible to a wider audience: [wisconsinproject.blogspot.com/](http://wisconsinproject.blogspot.com/) (examining Wisconsin through postcard views made and found) and [blotchyblobsblog.blogspot.com/](http://blotchyblobsblog.blogspot.com/) (depicting a rural utopian idyll and critique via watercolors). Faculty research and student summer research grants from Lawrence University helped John and Julie fully realize the project.

Considered the state's most prestigious showcase of contemporary Wisconsin visual art, the Madison Museum of Contemporary Art's "Wisconsin Triennial" (September 2013-January 2014) includes John and Julie's ambrotypes.

• **Colette Lunday Brautigam**, *visual resources librarian*, completed the migration of the teaching collection into ARTstor's Shared Shelf. She also migrated the Lawrence University Department of Theatre Arts Productions collection into Shared Shelf Commons, where it can be viewed on the open web.

For the second year in a row, Colette helped all senior studio art majors upload images of their work to Lux, the Lawrence University institutional repository. These images highlight the fine work of the studio art majors. They can be viewed on the open web at: [http://lux.lawrence.edu/art\\_se/](http://lux.lawrence.edu/art_se/). Lux has been a great way to highlight the scholarly and creative works of the Lawrence University students, faculty, and staff.

She worked with **Antoinette Powell**, *music librarian and associate professor*, to help students receiving honors load their honors projects into Lux (<http://lux.lawrence.edu/luhp/>) and worked with **Dave Hall**, *associate professor of chemistry*, to create a collection of 3-D printable infectious pathogens in Lux ([http://lux.lawrence.edu/chem\\_3d/](http://lux.lawrence.edu/chem_3d/)).

Colette also served on the board of the Fox Cities Book Festival.

• **Rob Neilson**, *associate professor of art and Frederick R. Layton professor of art*. Rob is currently working on a number of public art projects in southern California. His exhibitions include shows in Boston, New York City, Los Angeles, and Appleton. Recent sculpture projects have appeared in numerous media outlets and publications including a feature article in the October 2012 issue of *Sculpture Pacific Magazine*.



Allen Turner  
**Panel from Tree Felled by Swirl**, 1981  
 3 Panel Lithograph  
 Donated by Dr. Robert Dickens, '63

This past fall Rob was the visiting faculty at the Lawrence University London Centre, where he taught “Rude Britannia: Issues and Controversies in Contemporary British Sculpture and Public Art” and “London Walks and Chalks: An Introduction to Drawing with the Artist as Flâneur.”

Also of note was Rob’s role as singer and guitarist with the LU faculty band *The Infectious Pathogens*. On the last days of classes, the band (colloquially known as *The Pathos*) performed for a “standing room only crowd” at the Viking Room.

• **Benjamin D. Rinehart**, *associate professor of art*. Ben had a solo exhibition of his work in the Edna Carlsten Gallery at the University of Wisconsin-Stevens Point, curated by Director Caren Heft. One of his artist books is showcased in a new publication by Lark Books, *500 Handmade Books Volume 2*, available at all major booksellers in September 2013.

This was the third year for the Paper Fox Printmaking Workshop. Ben hosted three artists and two “Print & Ceramic” sales that continue to grow in popularity. The sales showcase prints from a wide range of dynamic visiting artists, as well as student prints, ceramic art, and other printed ephemera. Below are the participating artists from the 2012/13 academic year.

**Lyle Salmi**

Painter & Printmaker, Decatur, Illinois

**Stephen Frech**

Poet & Printmaker, Decatur, Illinois

**D.L. Simmons**

Printmaker, Spartanburg, South Carolina



At the Honors Dinner this year Ben was touched to have received the “University Award for Excellence in Advising.” This award reaffirms his passion and excitement for advising students through their careers at Lawrence University.

Ben also facilitated and organized a traveling exhibition for the “Current Voodoo: LSU Printmaking Workshop” portfolio exchange. The portfolio traveled to the following venues in the past year: SGCI “Navigating Currents” (2012), Louisiana State University (2012), University of Louisiana-Lafayette (2012), and Lawrence University (2013).

Ben is looking forward to his sabbatical this fall and to spending more time with his boys (Harper 6 and Ramey 4 years old) this summer. He is participating in three residencies during his sabbatical at Millikin University in Decatur, Illinois, the University of Texas-Arlington in Arlington, Texas, and Louisiana State University in Baton Rouge, Louisiana, his alma mater.

• **Benjamin Tilghman**, *assistant professor of art history*.

Ben returned to Lawrence last fall as the new professor of Medieval and Renaissance art, and has been thrilled and daunted by the prospect of trying to fill **Michael Orr’s** shoes. A specialist in illuminated manuscripts and in the art of early medieval England and Ireland, Ben earned his Master’s degree at Williams College and his Ph.D. at Johns Hopkins University. Before coming to Lawrence, Ben served as a curatorial fellow at the Walters Art Museum in Baltimore, Maryland, and also taught at George Washington University and the Maryland Institute College of Art.

In addition to teaching Freshman Studies and existing courses in the department, Ben introduced a new course this year on Byzantine Art that allowed the class the chance to work with coins from the Otilia Buerger Collection. In coming years, he plans to introduce new classes on Islamic Art and on “Thing Theory” in art as he also restructures the existing offerings on medieval and renaissance topics. He was also pleased to organize a pop-up exhibition of artworks by alumni attending their 15th Reunion this past June.

In October, Ben traveled to Rome to present the paper, “Graphicacy, Visuality, and Materiality: The Written Word in Early Medieval Art” at a seminar on the concept of graphicacy in early medieval society, and in May he presented a paper entitled “The Still Lives of Medieval Art,” which considered the stillness of artworks, at the International Congress of Medieval Studies in Kalamazoo, MI. Over the summer, he traveled to London to conduct research and then to Dublin to present the paper “Glossators or Vandals? Irish Books in Anglo-Saxon Hands,” which looked at the “updating” of illuminated manuscripts by later owners. He also published two essays this year: one on medieval giant bibles in the book *Word and Image: The Hermeneutics of The Saint John’s Bible*, and the other on tiny books, entitled “Divinity in the Details: Miniature Books and Meditation in Medieval and Early Modern Manuscripts,” in the *Journal of the Walters Art Museum*. He also blogs occasionally at <http://thematerialcollective.org/>.

• **Leslie Walfish**, *acting director of the Wriston Art Center Galleries*, enjoyed a busy year. During 2012–2013 she taught History of Photography and Internship in Museum Practices while putting on nine exhibitions at the Wriston Art Galleries. These exhibitions focused on cross-disciplinary connections and involved members from across the campus community.

Leslie co-presented a lecture on German Expressionist Art and Music with **Erica Scheinberg**, *instructor of music*, for the opening night of the *German Expressionism exhibition* in Fall Term. This opening night incorporated a musical performance by **Matthew C. Michelic**, *associate professor of music and teacher of viola*. In addition to this musical event, Leslie organized other

live events in the gallery including a didgeridoo concert with Brian Pertl, Dean of the Conservatory of Music, and a dance and music collaboration between IGLU and dance students with **Mathew Turner**, *instructor of music*, and **Rebecca Salzer**, *visiting professor in dance*. The Galleries also hosted poetry readings and a concert of five bands from the Midwest. During Winter Term, Leslie, **Caitee Hoglund '12**, *interim collections assistant*, and UW-Green Bay faculty member Carol Emmons, organized a cross-campus exhibition titled *Art and Text*. This show featured art, musical scores, rare books and more on display in the Leech Gallery, as well as the Thomas Steitz Hall of Science, the Music/Drama buildings, and the Mudd Library. Leslie coordinated a booklet with essays written by faculty in the Art History, English, Music, and Biology departments that covered themes explored in *Art and Text* exhibition.

To create better awareness of lesser-known objects in the collection, Leslie and Caitee started weekly Facebook mini-exhibitions. Each weekday, a new image from the collection is featured with information about the work or artist. Outside the gallery, Leslie organized temporary exhibitions in the Conservatory for the Debussy Birthday Celebration and a show of war images to coincide with the LSO and Choir performance of Benjamin Britten's *War Requiem*. Leslie spoke to the audience in the Memorial Chapel about the connection between the music and the art on display.

Leslie also traveled to Chicago, Sheboygan, and Taos, New Mexico to acquire new art for the Permanent Collection. She added new storage for three-dimensional works in the collection and continued her efforts to make the galleries more energy efficient by purchasing more LED lights for the gallery. She also updated the museum software for the digital database.

Planning for next academic year, Leslie has organized a diverse group of artists from all over the country including a book artist, a ceramicist, an installation artist, a painter, a photographer, and a sculptor. She looks forward to an exciting year working with **Beth A. Zinsli**, the new Director and Curator of the Galleries.

- **Lynn Zetzman**, *lecturer in art education*. Two of Lynn's Xavier High School students earned awards during the Bergstrom Mahler Art Museum's spring area high school art show. One of her students took home a top award at the UW Oshkosh state wide juried art show in the spring. Three of her computer graphic students took first place awards in a state wide competition sponsored by the Catholic Daughters organization.

Lynn spent two weeks this summer completing an inventory of Biganess Livingstones paintings in her Vallejo, California studio. She will be moderating a panel discussion among Ms. Livingstone's former students this coming fall at the University of Wisconsin-Fox Valley.

This August Lynn took a workshop in Goshen, Indiana learning about creating and using ceramic decals. She is excited about printing decals of her student's drawings in the Xavier classroom for incorporation into their ceramic projects. She also wrote a grant this past school year obtaining funds for a glass kiln in Xavier's art classroom. The kiln was delivered and set up this summer.

She also wrote a grant through UW-Madison's Center for the Humanities. Her Xavier art students will be reading Orhan Pamuk's *Snow* during the 2013-2014 school year and creating a number of art works related to conceptual themes in that text. She and her students will be meeting with Orhan Pamuk in person this coming fall.

In April 2014 Lynn will have a show of recent art works at UW-Fox Valley in Menasha, Wisconsin.

## EMERITI/AE NEWS

- **Arthur Thrall** has had an extraordinary year both artistically and physically. Best of all his health has rallied after suffering from a rare white blood cell syndrome most of 2012. It is under control with expert doctors in Milwaukee and Madison. He is receiving monthly infusions of a special antibody developed by GlaxoSmithKline where his daughter is a director of drug targets! (although it was not her group)

### Arthur's artwork was shown at:

- **Nut Factory Open House**. A solo show in a small gallery in Riverwest, where Arthur has his studio in Milwaukee (it's a former nut factory).
- **Boston Printmakers Traveling Members Show "Blue & Green Selections of thINK"** at the Colby-Sawyer College - Sawyer Center for Fine & Performing Arts in New London, New Hampshire.
- **Society of American Graphic Artists (SAGA in New York)** 80th Members Exhibition at the DeLind Gallery in Milwaukee, where Arthur was a featured artist. He received the SAGA Lifetime Achievement Award from President Shelley Thorstensen. Arthur has been a member since 1953.
- **SAGA Collectors Prints**, at the publisher's table, the Southern Graphic Council International Conference in Milwaukee, Wisconsin.
- **Linear Dance**, a large oil painting, at the Museum of Wisconsin Art's new modern building in West Bend, Wisconsin.
- **SAGA members exhibition of prints "Across the Waters"** in Fukuoka, Japan
- **Print Revolution Exhibit** at Southern Indiana University in Evansville
- **Solo exhibition "Orchestrated Lines: Engravings & Paintings by Arthur Thrall"** at the Milwaukee satellite gallery of the Museum of Wisconsin Art—MOWA on the Lake (at St John's by the Lake). Accompanying it is a video documentary of him engraving a print -*Orchestrated Lines: Arthur Thrall, Engraver*. It can be seen on [www.wisconsinart.org/MOWAOnTheLake/default.aspx](http://www.wisconsinart.org/MOWAOnTheLake/default.aspx) and on his website [arthurthrall.com](http://arthurthrall.com).

## STARK COLLABORATION GRANT FUND

Students in the Digital Processes course used funding from the grant for their "Big Prints III—30 Years After *Simulations* (1983-2013)" project in Spring Term. They explored the ideas of "realness" and the "hyperreal" as described in Jean Baudrillard's seminal book, *Simulations*, first published in the United States in 1983. He wrote: "Whereas representation tries to absorb simulation by interpreting it as false representation, simulation envelops the whole edifice of representation as itself a simulacrum. This would be the successive phases of the image: it is a reflection of a basic reality, it masks and perverts a basic reality, it masks the absence of a basic reality, it bears no relation to any reality."

Students used iconic-ness, subject matter, form, scale (30x40 inch prints and Flickr), flatness, and focus to emphasize the idea of simulation in the 21st century. Milwaukee photographer, Sonja Thomsen, helped each student select one image to be output to 30x40. The prints are currently on display in the Wriston atrium.

## STUDENT NEWS

A number of awards were presented to studio art and art history majors and minors at the 2013 Honors Convocation. We list below the recipients and their award citations:

## ART AND ART HISTORY DEPARTMENT AWARDS

The **Betty Champion Hustace Prize in Art History**, for a student demonstrating excellence in the field of art history, was awarded to **Allison Cochrane '13**, *psychology*, for her dedication to and enthusiasm for art historical scholarship. Allison's work in the classroom is distinguished by her critical mind, enthusiasm and determination. Her written work demonstrates a remarkably sophisticated understanding of complex theoretical concepts.

The **Jessie Mae Pate McConagha Prize**, recognizing interdisciplinary scholarship in art history within the humanities, was awarded to **Martha Allen '13**, *art history/history*. In her art history classes, Marty has assiduously pursued questions about the historical setting and the intellectual background of works of art, whether in Ancient, Medieval or Modern periods. Her *Senior Experience* essay on the *War Triptych* by Otto Dix, written in her capacity as a history major, is exemplary in its use of art as an important primary source for understanding the dynamics of conflict, politics and individual psychology in the past as well as the present. As a whole, her work demonstrates the need to view art within a richly interdisciplinary context.

The **E. Dane Purdo Award**, awarded to an exceptional student in art or ceramics for summer study, was awarded to **Deborah Levinson '13**, *studio art*, for her intelligent critique of the contemporary world and superlative printmaking and book arts technique.

The **Estelle Ray Reid Prize in Art**, intended for graduate study of art, was awarded to **Caroline Parry '10**, *studio art/English* for graduate study in art history at the University of Oregon. As a studio art and English major at Lawrence, Caroline demonstrated curiosity, dedication and passion for the visual arts. Caroline's

ability to make interdisciplinary connections was exemplary. Caroline will focus her studies on contemporary art and plans to pursue a career as a museum curator.

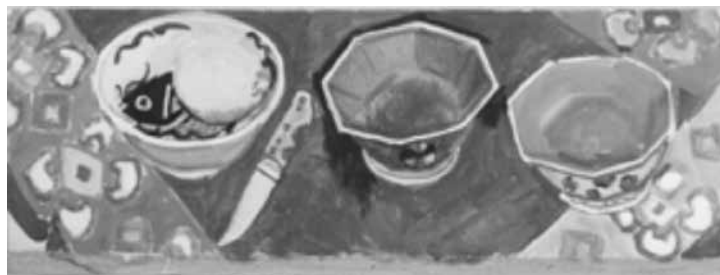
The **Elizabeth Richardson Award** in studio art was awarded to **Rachele Krivichi '13**, *studio art*, for her exploration of environmental issues and her dedication to multimedia art making, examining ways digital media has extended the understanding of place both globally and locally.

The **Senior Art Prize for Men** in studio art was awarded to **Matthew Cawley '13**, *studio art/theatre (Spanish)*. Matt has been working with wheel thrown ceramic forms to create installations that are investigations of space, form and process. His artistic growth has been steady and driven by hard work and curiosity.

## OTHER AWARDS

The **Letterwinner Award** for outstanding seniors who have earned eight or more varsity letters was awarded to **Catherine Kaye '13**, *psychology (studio art)*, for basketball, softball, and cross country.

The **Pond Award for Women** for all-around athletic ability by a senior woman in two or more sports and for sportsmanship, school spirit, and scholarship was awarded to **Catherine Kaye '13**, *psychology (studio art)*. Cathy was a four-year starter in both softball and basketball and has demonstrated leadership and dedication to athletics.



From the Schomer Lichtner and Ruth Grotenrath Collection

## THE FOLLOWING STUDENTS GRADUATED WITH HONORS:

### cum laude:

**Maria Valencia**, studio art/ government  
**Allison Bjork**, studio art/psychology  
**Rachele Krivichi**, studio art  
**Deborah Levinson**, studio art  
**Paul Smirl**, English (anthropology/studio art)

### magna cum laude:

**Alyssa Gagg**, studio art (biology)  
**Anam Shahid**, studio art (theatre arts/film studies)

### summa cum laude:

**Athena Naylor**,  
studio art (art history/biology)

## THE FOLLOWING STUDENTS WERE ELECTED TO HONOR SOCIETIES:

### Phi Beta Kappa

Athena Naylor '13,

studio art (art history/ biology)

### Mortar Board:

Emma Brayndick '14, theatre (studio art)

Abby Guthmann '14, biology (studio art)

## THE FOLLOWING MAJORS WERE INCLUDED ON THE 2012-13 DEAN'S LIST:

Martha Allen '13, history (art history)

Rachel Arnow '15, studio art (psychology)

Maria Ayala Valencia '13, studio art/government

Claire Bassett '14, English (art history)

Allison Bjork '13, studio art/psychology

Olav Bjornerud '14, studio art/history

Emma Brayndick '14, theatre arts (studio art)

Matthew Cawley '13, studio art/theatre arts (Spanish)

Erin Davis '15, anthropology (studio art/biology)

Brenna Decker '14, biology (studio art)

Kyla Erickson '14, studio art/psychology

Alyssa Gagg '13, studio art (biology)

Olivia Gruebel '14, biology (studio art)

Zhan Guo '13, studio art/economics

Abby Guthmann '14, biology (studio art)

Haley Hagerman '14, studio art/history

Stephanie Klauer '14, art history/government

Alexandra Koszewski '15, theatre arts (studio art)

Rachele Krivichi '13, studio art

Jennifer Krueger '13, psychology (studio art)

Cori Lin '14, anthropology (studio art/psychology)

Shea Love '14, studio art

Megan Ludwig '15, psychology/gender studies (studio art)

Annica Mandeltort '15, anthropology (studio art/ psychology)

Adriane Melchert '15, French (art history)

William Melnick '14, economics (studio art)

Emma Moss '14, studio art

Athena Naylor '13, studio art (art history/biology)

Sarah Jane Rennick '15, studio art

Hannah Rifkin '16, studio art

Anam Shahid '13, studio art (film studies/theatre arts)

Allison Sickinger '15, psychology (studio art)

Cooper Sinai-Yunker '14, mathematics/physics (studio art)

Paul Smirl '13, English (anthropology/studio art)

Johnathan Vanko '13, studio art/theatre arts

Emma Wandro '15, art history/biology

# the Mudd GALLERY

**The Mudd Gallery is located on the third floor of the Seeley G. Mudd Library.**

During the 2012-13 academic year there were nine exhibitions, including solo student installations, work from various studio art classes, and the 2013 Senior Art Minors show.



## WRISTON ART CENTER GALLERIES

2013-2014 Exhibition Schedule

### September 27–November 27

#### Leech Gallery

Capturing Modernity: Art, Fashion and Artifice

#### Hoffmaster Gallery

Alison Stehlik, ceramics

#### Kohler Gallery

Stephanie Williams: Homegrown

### January 17–March 16

#### Leech Gallery

The Art of Stuff

#### Hoffmaster Gallery

Leslie Smith III, paintings

#### Kohler Gallery

Sandry Dyas, photography

### March 28–May 4

#### Hoffmaster Gallery

Shawn Sheehy, book arts

#### Kohler Gallery

Carol Emmons, sculptural installation

### May 23–July 27

Annual Senior Art Majors Exhibit

## ACQUISITIONS BY THE GALLERY

Wriston Art Center Galleries would like to thank the following individuals who donated funds and works of art to our galleries between July 2012 and June 2013:

### **Dr. Robert Dickens '63**

Donated eighteen works of modern and contemporary art, including several etchings and watercolors by Warrington Colescott, prints by Richard Bosman, Käthe Kollwitz, Suzanne McClelland, and Frances Myers, and a three panel lithograph by Allen Turner, which is on view in President Mark Burstein's home.

### **Kohler Foundation, Inc.**

Fifteen works by the late Milwaukee artist Schomer Lichtner

### **Judge D. Michael Lynn '65**

Donated two oils on canvas by Édouard Cortès and two lithographs by André Renoux from the collection of his late partner, Roger Dale Kruse, to adorn the Roger Dale Kruse Reflection Room on the fourth floor of Seeley G. Mudd Library.

### **Dorothy Mortensen**

One print and one painting by La Vera Pohl, artist and collector of German Expressionist art.

### **Paper Fox Printmaking Workshop**

Visiting artists Stephen Frech, Edwin Jager, Emily Martin, and Lyle J. Salmi each donated a work created in conjunction with the Paper Fox Printmaking Workshop.

In addition, Stephen Frech donated *Deep Chess*, Stephen Frech & Shawn Sheehy, broadsheet letterpress print, and D.L. Simmons donated *Papa's Home*, D.L. Simmons, 2011, archival pigment print and silkscreen to the collection.

### **Joy Povolny, in honor of Mojmir Povolny**

*Emeritus Professor of Government and Henry M. Wriston Professor of Social Sciences*

Donated four prints, including an etching by O. Coubine, a pottery plate by Maria Martinez, an Acoma pottery vase by Y. Estevan, an oil on canvas by former Lawrence University student, and a large painting of famous composers, which will hang in the Development Office's new space in Wilson House.

### **Dennis Rocheleau**

*Eckerts Orchard ATM*, Jonathan Canlas, inkjet print

### **Jack Stanley**

*Emeritus Professor of Religious Studies and the Edward F. Mielke Professor of Ethics in Medicine, Science, and Society, and Linda Stanley*

Twenty-two Indian ritual and household objects, which they collected on twelve visits to India between 1970 and 1990.

### **Maurine Campbell '43, Estate**

Two watercolors by Karl Priebe  
One screen print by Dean Meeker

### **Muriel Zuehlke Estate**

Two carved jade pieces  
Twelve ceramic vessels  
Twenty-one paintings  
One painted mirror  
Four prints  
Twenty-eight sculptures



Warrington Colescott  
*Sunday Service*, 1999  
Watercolor  
Donated by Dr. Robert Dickens, '63

## ALUMNI/AE NEWS

### 1950's

**Beverly Hart Branson '55**, studio art, tells us her art world has been and continues to be active. She has had her artwork shown at:

- "Members Biennial" at the Trout Museum of Art in Appleton
- "Guenzel Gallery Artist Show" at the Peninsula School of Art in Fish Creek, Wisconsin
- "Beverly Hart Branson Exhibit" at The Meadows Art Gallery in Sister Bay, Wisconsin
- "Art From the Gardens," presented by The Trout Museum of Art and Designing Women, at the Jack Richeson Art School and Gallery in Kimberly, Wisconsin
- "The Gallery of the Door County Art League" at the Top of the Hill Shops in Fish Creek, Wisconsin
- "Off the Wall Show," Door County Art League, at the Sister Bay Village Hall
- "Members Showcase Exhibit" Door County Art League at the Door Peninsula Winery in Carlsville, Wisconsin

**Ruthann Stolzman '58**, studio art, makes her artistic creations now on computer. Living in Silicon Valley, she says it is the way of life there. Two of Ruthann's granddaughters are majoring in computer art and animation.

### 1960's

**Pam Berns '69**, studio art, has been the publisher of Chicago Life magazine since starting it in 1985. Pam began painting watercolors again this year and is represented by Edgewood Orchards Gallery. She says "it feels good to paint again."

**William Gardiner '68**, studio art, says that having been first and foremost an architect, then a contractor, and finally a developer, he is now retired and loving it. His passion is bicycle riding, especially the multi-day rides (6 days at 60 miles a day is great). His wife Barbara Kratky Gardiner '68, French, also a retired French teacher, is not a rider, but enjoys Zumba and swimming. Bill said, "if I could just get her to drive the motor home, I'd ride across America!"

### 1970's

**James Hisson '75**, studio art, says that after years of expressing his artistic side through house painting, furniture refinishing, and the occasional kid's project, he is very happy to report that in the last year he has again begun to create art objects. One is a 'sculptural collage,' and others are enhanced constructs of found objects. "More ideas seem to be coming to me these days, and I'm acting on them."

### 1980's

**Martha Buche '86**, studio art, has been doing a lot of work with copper in the last few years. She has also dabbled in blacksmithing, but her love is still copper. Martha is making jewelry, bas relief hammered sculptures, and some vessels and chimes. She plans to be teaching a high school metal-smithing class in fall of 2013.

Martha still keeps busy with fiber arts, working a lot in felted wool. This past year she did a fair amount of drawing and watercolor painting. She also paints in oils on occasion. In early spring 2013 she did a series of origami-esque geometric icosehedron-based flowers. Martha said, "I keep busy!"

**Carrie Schaefer Martino '83**, studio art/biology, is currently working at Teva Neuroscience. Her husband, **Michael Martino '80**, geology, is at Morgan Stanley. They have three children: AnnaMarie - 2013 Bates College graduate, Anjelica- Seton Hall University, The Stillman School, class of 2015, and Joseph - freshman at Benilde-St Margaret's high school, class of 2016.

### 1990's

**April Eisman '94**, art history/English, received tenure in 2013 and is now associate professor of Art History at Iowa State University. She is currently completing a one-year fellowship in Germany (from the American Association of University Women), where she has been working on her next book project, *Women Painters in East Germany*. Over the past year, April has given papers at conferences in Berlin, Weimar and Paris, and published articles in *Oxford Art Journal* and *Contemporaneity*.

**Jennifer Eberly Krickus '96**, biology/studio art, is starting her second year as an Anatomic Pathology Resident at the University of Illinois College of Veterinary Medicine.



## 2000's

**Lucas Brown '02**, *art history*, is working as the director of research and operations in the development office at Lawrence University. He and his wife reside in Door County and have a son, Elliott, who is turning two in August.

**Melanie Heindl '08**, *art history/English (studio art)*, is working as an art therapist for The Children's Home Association of Illinois in Peoria, Illinois, providing community-based art therapy to children ages three to seventeen. Melanie will soon be applying for licensure as a registered art therapist and counselor. She has also recently begun building recycled furniture in addition to maintaining her identity as a mixed media artist and has been selling works nationally for the past year.

**Cecily Hughes '08**, *French (studio art)*, graduated in June 2013 with an MFA in Contemporary Art Theory from the Edinburgh College of Art in Edinburgh, Scotland. She currently works as a curatorial intern at the National Galleries of Scotland.

**Melanie Kehoss '02**, *studio art (English)*, has settled in the Washington, DC area, and is teaching Senior Art Seminar at Georgetown University, as well as various children's art classes. In May, Melanie had her first solo show in DC at Hillyer Art Space. Melanie also says "equally exciting, I married chemistry professor Kaveh Jorabchi last June."

**Andy Kincaid '09**, *studio art (art history/physics)*, continues to live and make work in Jackson Hole, Wyoming, where he recently started the artist-run gallery space and publisher *In The Pines* with two colleagues. Over the past year, his work was shown in several group exhibitions, including shows in Minneapolis and in Wyoming. Andy is excited to spend some time in Wisconsin this August, the first since 2009, as he attends the artist residency program, ACRE. See more at [itpspace.com](http://itpspace.com) and [andykincaid.com](http://andykincaid.com).

**Anne Kingma '01**, *art history/anthropology*, tells us her creative impulses are being employed at Another Season, a local flower shop in her small Indiana town. Anne and her husband Ron moved there from Montana almost two years ago with their two daughters. Anne's most important life work, being a wife and a mom, keeps her busy and blessed every day.

**Sarah Sager '02**, *studio art*, recently started her fourth year with Sulphur Springs Valley Electric Cooperative in Cochise County, Arizona. Sarah's job duties have shifted from Right of Way legalities to Environmental Compliance, which she absolutely loves. One of her main duties is avian management, which Sarah says is a fancy way of saying "keeping birds of prey safe on our electric facilities." Even though work keeps her busy, she still tries to find time for painting, photography, and digital media.

## 2010's

**Carolyn Bauer '12**, *art history (anthropology)*, is attending The George Washington University for a Master's of Arts degree in Art History with museum training. She is anticipating a graduation date of Spring of 2014. Currently, Carolyn is a curatorial intern for the Arlington Arts Center.

The Department of Art & Art History is now on Facebook!



Post news or check out what's going on at  
[www.facebook.com/lawrenceart](http://www.facebook.com/lawrenceart)

2014 NEWSLETTER DEADLINE

**AUGUST 1, 2014**