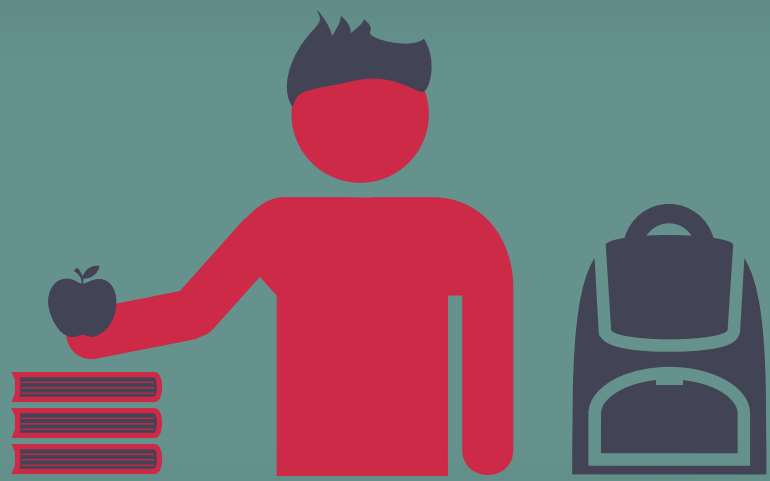


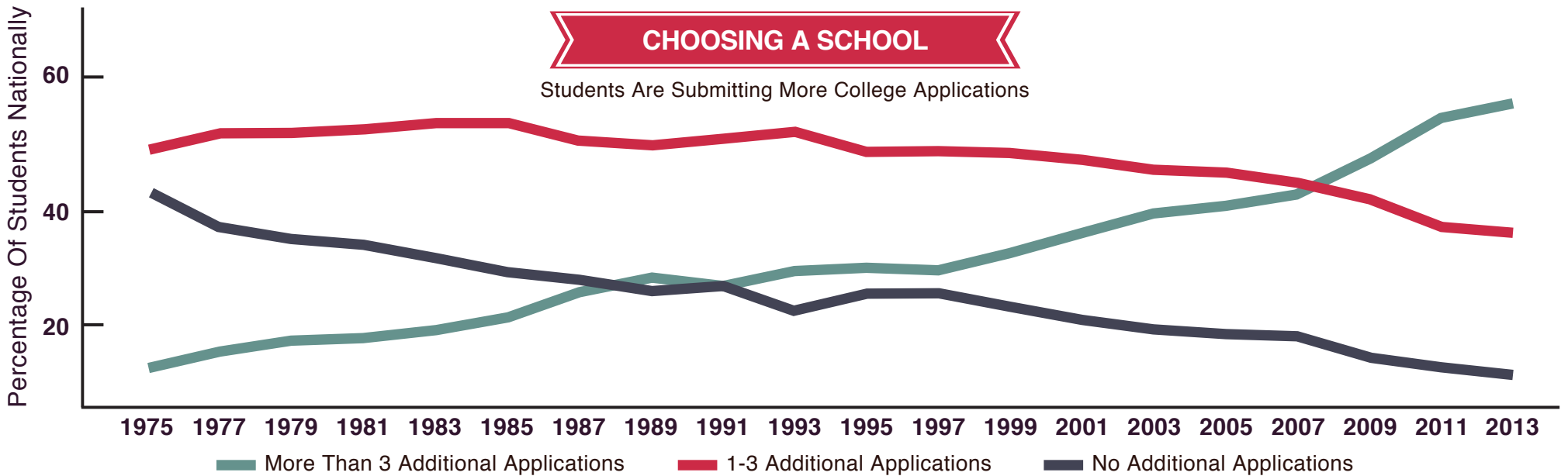
FIRST YEAR STUDENTS

— AT A GLANCE —



While national statistics suggest just 38% of this year's freshman class will graduate in 4 years, 84% expect to do so. Below is a snapshot of the beginning of their college career.

National results are shown in BLACK | Your local institution results are shown in GRAY



IN FACT, 24% SUBMITTED MORE THAN 7 APPLICATIONS IN ADDITION TO THE SCHOOL WHERE THEY ENROLLED.



76%
Were Admitted To Their First Choice



57%
Actually Enrolled In That School

When Choosing A School Cost Was Almost As Important As Academics



64%

Academic Reputation

46%

Cost Of Attendance



49%

Financial Aid

A Connected Classroom

As society becomes more technological, so do our students.



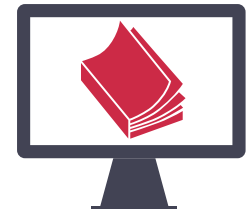
42%

Used An Online Instructional Website Assigned For A Class



69%

Did So To Learn Something On Their Own



But just 7% expect to take online courses at their institution. And only 3% expect to do so at another college.

Embracing Diversity

Students are coming from more racially diverse high schools and most feel confident working with people from all backgrounds.



46%

Attended A High School That Is At Least Half Non-White



54%

Believe They Work Cooperatively With Diverse People



44%

Think They Can See The World From Others' Perspectives



Only 27% were open to having their views challenged.

Political Viewpoints

46% of students classify themselves politically as "middle of the road."



83%

Agree That Gays And Lesbians Should Be Able To Legally Adopt A Child



37%

Think The Government Should Raise Taxes To Reduce The Deficit



64%

Believe Handgun Sales Should Be More Controlled



Information about students entering college helps enrollment planning, retention efforts, and provides a baseline for understanding college effectiveness. Register for the CIRP Freshman Survey at www.cirpsurveys.org. The 2013 CIRP Freshman Survey report is available as a free download at heri.ucla.edu/tfsPublications

Survey Source: CIRP Freshman Survey 2013

www.heri.ucla.edu

[facebook.com/HERI.CIRP](https://www.facebook.com/HERI.CIRP)

[@HERIUCLA](https://twitter.com/HERIUCLA)