

Graduation Rates Disaggregated by Sex

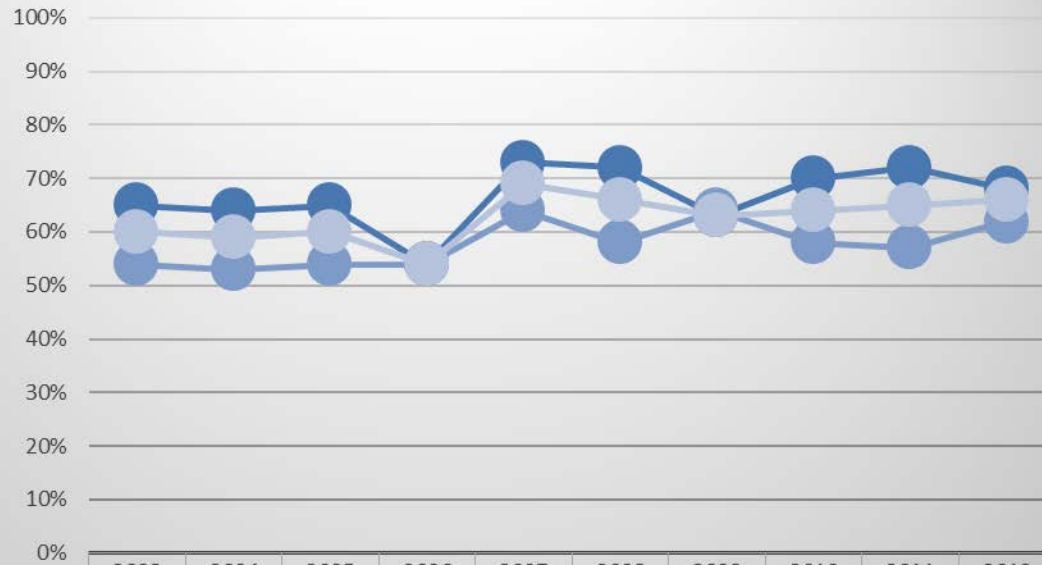
Number of First-time, Full-time, Certificate- or Degree-Seeking, First Year Students	Cohorts entering in fall of:									
	2003	2004	2005	2006	2007	2008	2009	2010	2011	2012
Female	184	192	216	186	183	219	178	235	171	225
Male	162	148	178	175	164	154	170	210	152	180
Total Original Cohort	346	340	394	361	347	373	348	445	323	405
Total Allowable Exclusions	1	1	3	0	2	0	0	0	0	0
Adjusted Cohort	345	339	391	361	345	373	348	445	323	405

	Cohorts entering in fall of:									
	2003	2004	2005	2006	2007	2008	2009	2010	2011	2012
Four-Year Graduation Rate										
Female	65%	64%	65%	54%	73%	72%	63%	70%	72%	68%
Male	54%	53%	54%	54%	64%	58%	64%	58%	57%	62%
Adjusted Cohort	60%	59%	60%	54%	69%	66%	63%	64%	65%	66%
Five-Year Graduation Rate										
Female	80%	74%	80%	67%	84%	82%	74%	80%	85%	83%
Male	69%	68%	68%	75%	76%	71%	75%	74%	72%	74%
Adjusted Cohort	75%	71%	75%	71%	80%	78%	75%	78%	79%	79%
Six-Year Graduation Rate										
Female	82%	76%	83%	69%	85%	84%	75%	81%	85%	84%
Male	70%	70%	71%	77%	78%	74%	78%	76%	73%	77%
Adjusted Cohort	76%	73%	77%	73%	82%	80%	76%	79%	80%	80%

Notes:

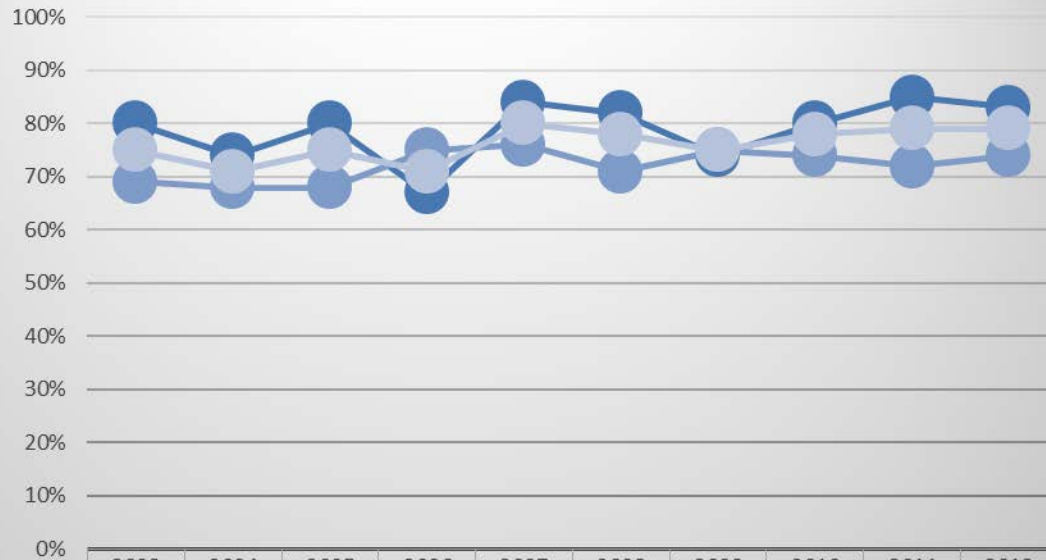
- Disclosure of graduation rates in these categories is required by the Higher Education Opportunity Act of 2008.
- Cohorts represent the fall cohort of first-time, full-time, certificate- or degree-seeking, first year students. All graduation rate figures reflect the adjusted cohort after allowable exclusions.

Four-Year Graduation Rates by Sex



	2003	2004	2005	2006	2007	2008	2009	2010	2011	2012
Female	65%	64%	65%	54%	73%	72%	63%	70%	72%	68%
Male	54%	53%	54%	54%	64%	58%	64%	58%	57%	62%
Adjusted Cohort	60%	59%	60%	54%	69%	66%	63%	64%	65%	66%

Five-Year Graduation Rates by Sex



	2003	2004	2005	2006	2007	2008	2009	2010	2011	2012
Female	80%	74%	80%	67%	84%	82%	74%	80%	85%	83%
Male	69%	68%	68%	75%	76%	71%	75%	74%	72%	74%
Adjusted Cohort	75%	71%	75%	71%	80%	78%	75%	78%	79%	79%

Six-Year Graduation Rates by Sex

