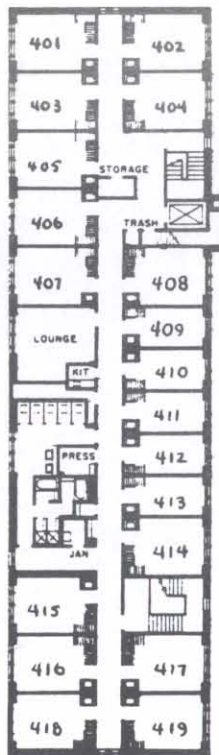
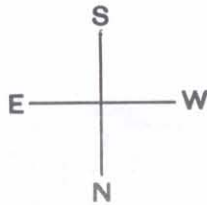


# LUCINDA DARLING COLMAN HALL LAWRENCE COLLEGE



Lucinda Darling Colman Hall was opened in the fall of 1956. It is primarily a dormitory for upperclass women, but a section is reserved for freshmen. The hall is under the supervision of a head resident, who serves as a counselor and coordinator of activities. A resident dietitian is in charge of the dining room, which also accommodates students who live at Ormsby Hall, the other dormitory housing freshman women. Carefully chosen upperclass counselors are assigned to the freshman section.

Student rooms are equipped with lavatories, single beds, desks, chairs, and dressers. Draw-drapes and study lamps are provided also. Students furnish their own pillows, blankets, bedspreads, and linens.

A commercial laundry service, providing and delivering clean sheets, pillow case, and towels each week, is available to those who wish it.

The floor plans for the entire dormitory are shown on these pages, with space reserved for freshmen indicated. **INCOMING FRESHMAN WOMEN MUST REMEMBER, WHEN INDICATING ROOM PREFERENCE, THAT ALL OTHER SPACES ARE RESERVED FOR UPPERCLASS WOMEN.**

