

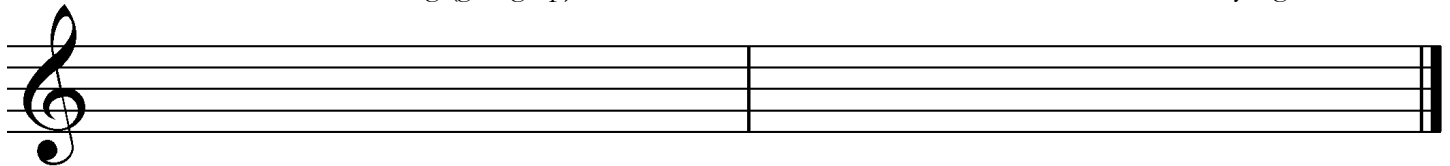


# Late Intermediate 2008

1. Write counting under every note and rest.

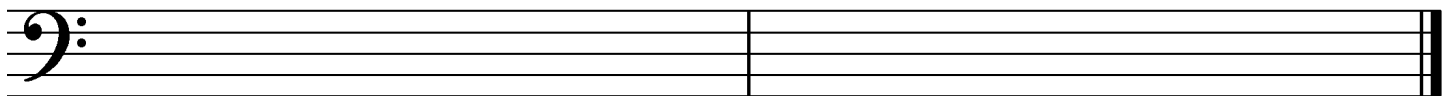


2. Draw these **scales** ascending (going up). Use **whole notes** and **accidentals**. Do **not** draw key signatures.



B harmonic minor

E-flat major



D harmonic minor

E major

3. Give the **major or minor** key for each key signature.



\_\_\_\_\_ major

\_\_\_\_\_ minor

\_\_\_\_\_ major

\_\_\_\_\_ minor

\_\_\_\_\_ major

4. Match the following. Some answers will not be used.

\_\_\_\_\_ accent

\_\_\_\_\_ D.C. al fine

\_\_\_\_\_ damper pedal

\_\_\_\_\_ AB form

\_\_\_\_\_ andante

\_\_\_\_\_ ostinato

\_\_\_\_\_  $\text{♩}$

\_\_\_\_\_ tempo

\_\_\_\_\_ allegro

\_\_\_\_\_ a tempo

\_\_\_\_\_ natural

1. moderately slow, walking pace

2. the speed of a piece

3. the repetition of a pattern many times in succession

4. quick and lively

5. hold note or rest longer than its usual value

6. emphasis given to a note by an increase in volume (>)

7. the left pedal

8. the right pedal

9. cut time (two half note beats per measure)

10. return to the original tempo

11. a form with three sections, the last the same as the first

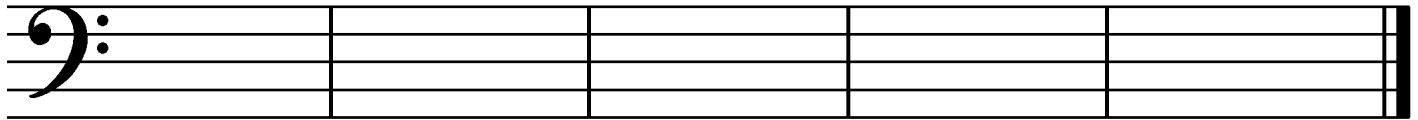
12.  $\text{♩}$

13. return to the beginning and play until the *fine*

14. return to the sign and play until the *fine*

15. a form with two sections

5. Draw these **blocked triads**. Use **whole notes** and **accidentals**. Do *not* draw key signatures.



A minor

E-flat major

D minor

A major

B minor

6. Identify these **intervals** by quality and number (for example, M3, P5). Use **P** for perfect and **M** for major.



7. Draw **key signatures** for these keys.



E major

A minor

A-flat major

E minor

D major

**Allegro**

What is the key of this example? (Give the letter name and major or minor.) \_\_\_\_\_

Give the definition of the tempo mark. \_\_\_\_\_

Identify the triad at letter **A** by its letter name and quality (major or minor). \_\_\_\_\_

Identify the triad at letter **B** by its letter name and quality (major or minor). \_\_\_\_\_

What is the line above the note at letter **C** called? \_\_\_\_\_

Identify the circled interval at letter **D** by quality and number (e.g., M6). \_\_\_\_\_

Identify the circled interval at letter **E** by quality and number. \_\_\_\_\_

Identify the circled interval at letter **F** by quality and number. \_\_\_\_\_

Is the interval at letter **F** a harmonic or melodic interval? \_\_\_\_\_

The first measure has only one quarter note, even though the piece is in 3/4 time. What is that kind of note called? \_\_\_\_\_