

# Late Intermediate Theory Test 2006

1. Write counting under every note and rest.

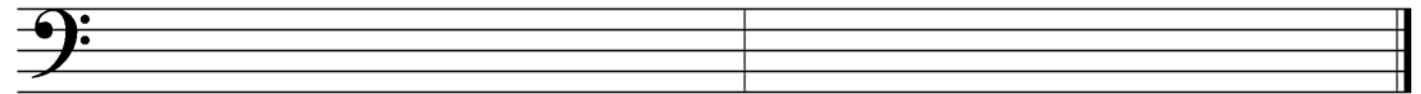


2. Draw these scales ascending (going up). Use whole notes and accidentals. Do **not** draw key signatures.



B harmonic minor

E-flat major



D harmonic minor

E Major

3. Give the **major or minor** key for each key signature.



\_\_\_\_\_ Major

\_\_\_\_\_ minor

\_\_\_\_\_ Major

\_\_\_\_\_ minor

\_\_\_\_\_ Major

4. Match the following. Some answers will not be used.

\_\_\_\_\_ ostinato

\_\_\_\_\_ D.C. al fine

\_\_\_\_\_ tempo

\_\_\_\_\_ AB form

\_\_\_\_\_ whole-tone scale

\_\_\_\_\_ tenuto

\_\_\_\_\_ damper pedal

\_\_\_\_\_ a tempo

\_\_\_\_\_ allegro

\_\_\_\_\_ natural

\_\_\_\_\_ accent

1.

2. the right pedal

3. the left pedal

4. quick and lively

5. walking pace

6. emphasis given to a note by an increase in volume

7. the speed of a piece

8. the repetition of a musical pattern many times in succession

9. a line placed above or below a note which indicates to hold the note its full value

10. return to the original tempo

11. form with three sections, the last the same as the first

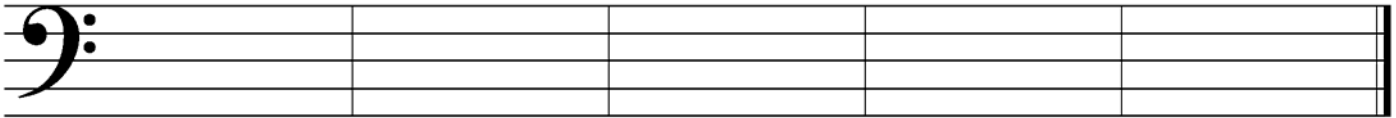
12. a six-note scale consisting entirely of whole steps

13. return to the sign and play until the *fine*

14. return to the beginning and play until the *fine*

15. a form with two sections

5. Draw these **blocked triads**. Use whole notes and accidentals. Do **not** draw key signatures.



E minor

A-flat major

B minor

D major

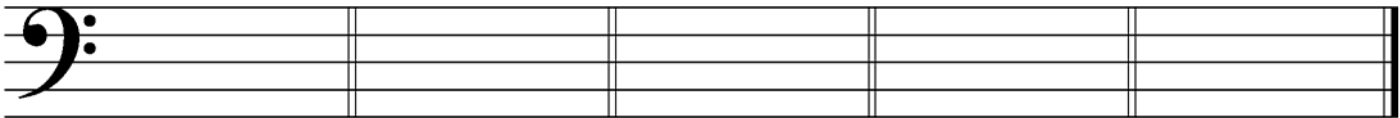
D minor

6. Identify these **intervals** by quality and number (for example, M3, P5). Use **P** for Perfect and **M** for Major.



\_\_\_\_\_

7. Draw **key signatures** for these keys.



B-flat major

E minor

D Major

D minor

E Major

**Allegro**

*mf*

Annotations: A (triad), B (triad), C (>), D (interval), E (interval), F (interval)

What is the key of this example? (Give the letter name and major or minor.) \_\_\_\_\_

Give the definition of the tempo mark. \_\_\_\_\_

Identify the triad at letter **A** by its letter name and quality (major or minor). \_\_\_\_\_

Identify the triad at letter **B** by its letter name and quality (major or minor). \_\_\_\_\_

What is the symbol (>) at letter **C** called? \_\_\_\_\_

Identify the circled interval at letter **D** by quality and number (e.g., M6). \_\_\_\_\_

Identify the circled interval at letter **E** by quality and number. \_\_\_\_\_

Identify the circled interval at letter **F** by quality and number. \_\_\_\_\_

Is the interval at letter **F** a harmonic or melodic interval? \_\_\_\_\_

What should the time signature be? a. 3/4 b. 6/8 c. 6/4 d. C (Circle one.)