

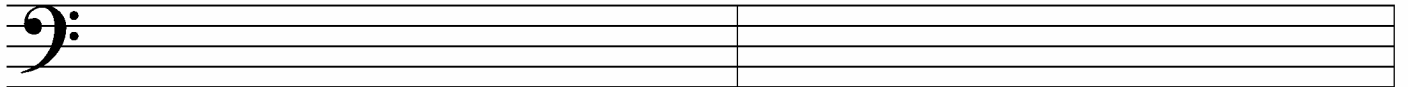
# Late Intermediate Theory Test

## 2004

1. Write counting under every note and rest. Add bar lines as necessary.

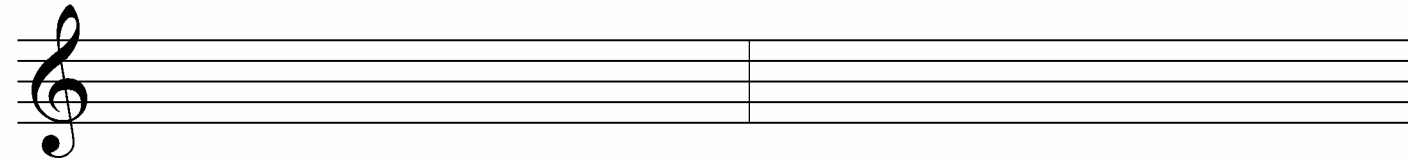


2. Draw these scales ascending (going up). Use whole notes and accidentals, **not** key signatures.



**d harmonic minor**

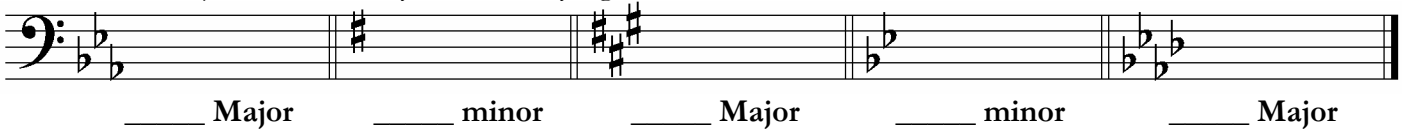
**B<sup>b</sup> Major**



**b harmonic minor**

**E Major**

3. Give the **major or minor** key for each key signature.



4. Match the following. Some answers will not be used.

\_\_\_\_\_ damper pedal

\_\_\_\_\_ tenuto

\_\_\_\_\_ a tempo

\_\_\_\_\_ AB form

\_\_\_\_\_ ostinato

\_\_\_\_\_ moderato

\_\_\_\_\_ whole-tone scale

\_\_\_\_\_ tempo

\_\_\_\_\_ D.C. al fine

\_\_\_\_\_ accent

\_\_\_\_\_ allegro

1. emphasis given to a note by an increase in volume

2. the right pedal

3. the left pedal

4. quick and lively

5. walking pace

6. moderate tempo

7. the speed of a piece

8. the repetition of a musical pattern many times in succession

9. a line placed above or below a note which indicated to hold the note its full value.

10. return to the original tempo

11. form with three sections, the last the same as the first

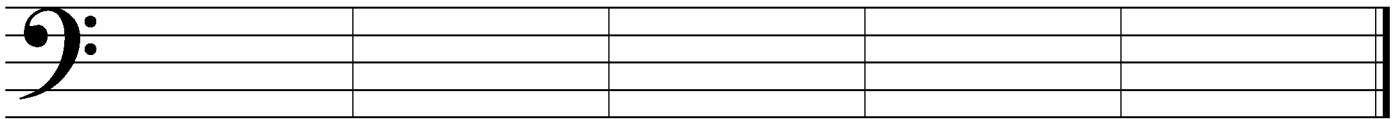
12. a six-note scale consisting entirely of whole steps

13. return to the sign and play until the *fine*.

14. return to the beginning and play until the *fine*.

15. form with two sections

5. Draw these **blocked triads** in **root position**.



d minor

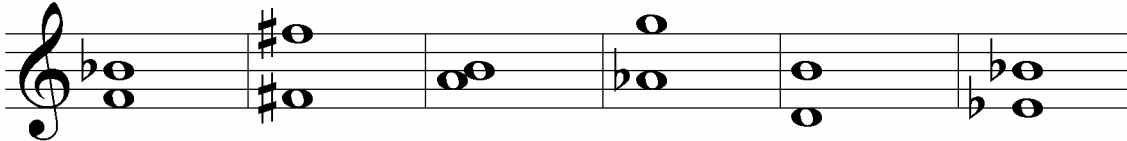
A Major

g minor

B<sup>b</sup> Major

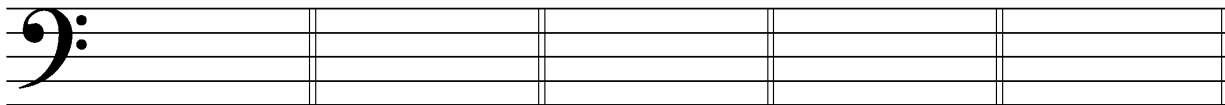
b minor

6. Identify these intervals by number and quality (for example, M3, P5). Use **P** for Perfect and **M** for Major.



\_\_\_\_\_

7. Draw key signatures for these keys.



E<sup>b</sup> Major

e minor

F Major

a minor

E Major

What is the key of this example? (Give the letter name and major or minor) \_\_\_\_\_

Give the definition of the tempo mark. \_\_\_\_\_

Identify the triad at letter **A** by its letter name and quality (major or minor). \_\_\_\_\_

In what position (root, 1<sup>st</sup> inversion or 2<sup>nd</sup> inversion) is the triad at letter **A**? \_\_\_\_\_

Identify the triad at letter **B** by its letter name and quality (major or minor). \_\_\_\_\_

In what position (root, 1<sup>st</sup> inversion or 2<sup>nd</sup> inversion) is the triad at letter **B**? \_\_\_\_\_

What is the symbol (>) at letter C called? \_\_\_\_\_

What is the name of the symbol (the line below the chord) at letter **D**? \_\_\_\_\_

Identify the circled interval at letter **E** by number and quality (e.g., M6). \_\_\_\_\_

Identify the circled interval at letter **F** by number and quality. \_\_\_\_\_

Is the interval at letter **F** a harmonic or melodic interval? \_\_\_\_\_