

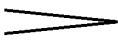
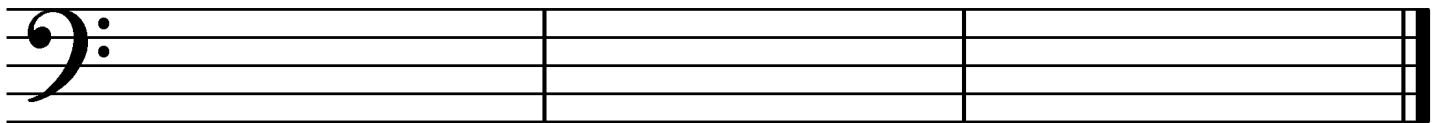


6. Match the following. Not all of the answers will be used.

- ___  3
- ___ staccato
- ___ slur
- ___ 
- ___ *mf*
- ___ **C**
- ___ interval
- ___ 
- ___ dynamics
- ___ #

1. instructions telling you how loud or soft to play
2. the distance between two notes
3. a sharp
4. a natural
5. a curved line telling you to play the notes legato
6. a curved line telling you not to re-strike the second note
7. moderately soft
8. moderately loud
9. short, not connected
10. getting louder
11. getting softer
12. common time (4/4)
13. a half rest
14. a whole rest
15. slow
16. eighth-note triplet

7. Draw G major, F major, and A minor **blocked** triads. Use **whole notes**.



G major triad

F major triad

A minor triad

8. Answer the questions about this example.

What is the dot above the note at letter **A** called? _____

What does the dot above the note at letter **A** tell you to do? (Answer in English.) _____

What is the curved line at letter **B** called? _____

What does the curved line at letter **B** tell you to do? (Answer in English.) _____

The circled interval at letter **C** is a. a half step. b. a whole step. (Circle one answer.)

The circled interval at letter **C** is a. harmonic. b. melodic.

The circled interval at letter **D** is a. a half step. b. a whole step.

The circled triad at letter **E** is a. a C major triad. b. a G major triad. c. an A minor triad. d. an E minor triad.

What does the circled symbol at letter **F** tell you? _____