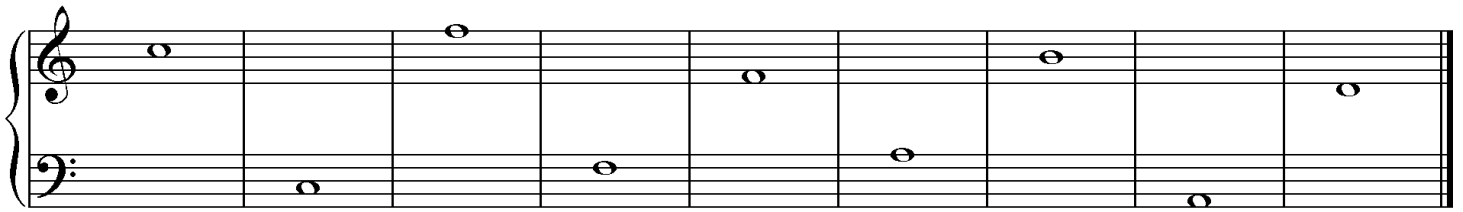




# Late Elementary 2008

1. Name these notes.



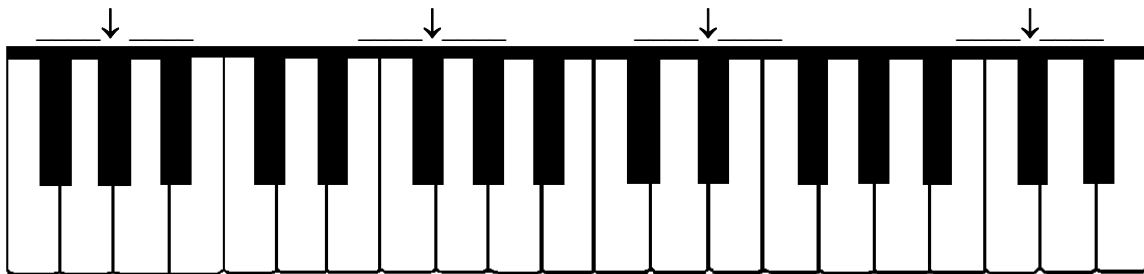
2. Write counting under every note and rest.



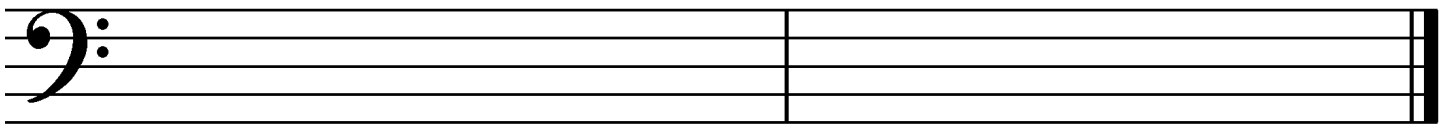
Draw bar lines. Remember the kind of bar line that goes at the end.



3. Write two names for each black key that has an arrow pointing to it.



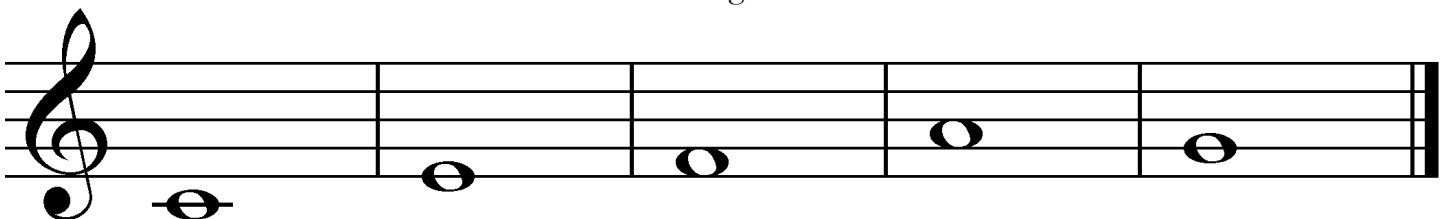
4. Draw **F major** and **A harmonic minor scales**, going up only. Use **whole notes** and draw sharps or flats before the notes that need them. Do **not** draw key signatures.



F major scale

A harmonic minor scale

5. Draw a **harmonic or melodic interval above** the given note. Use **whole notes**.



Harmonic 3<sup>rd</sup>

Harmonic 5<sup>th</sup>

Melodic 2<sup>nd</sup>

Melodic 6<sup>th</sup>

Melodic 4<sup>th</sup>

6. Match the following. Not all of the answers will be used.

\_\_\_ triad

\_\_\_ legato

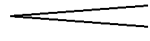
\_\_\_ slur

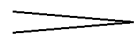
\_\_\_ 

\_\_\_ *mf*

\_\_\_ dynamics

\_\_\_ interval

\_\_\_ 

\_\_\_ 

\_\_\_ **b**

\_\_\_

1. slow

2. the distance between two notes

3. a sharp

4. a flat

5. a curved line telling you to play the notes legato

6. a curved line telling you not to re-strike the second note

7. moderately soft

8. moderately loud

9. smooth and connected

10. getting louder

11. getting softer

12. a three-note chord made of thirds

13. a half rest

14. a whole rest

15. instructions that tell you how loud or soft to play

7. Draw G major, F major and A minor **blocked** triads. Use **whole notes**.

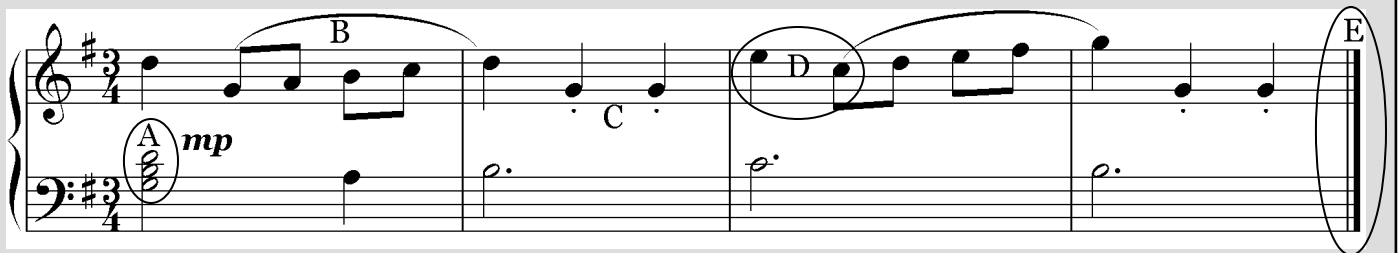


G major triad

F major triad

A minor triad

Answer the questions about this musical example.



Name the triad at letter A. Give its letter name and say whether it is major or minor (for example, C major.) \_\_\_\_\_

The notes under the slur at letter B are the first five notes of what scale? Give its letter name and say whether it is major or minor. \_\_\_\_\_

How does the slur at letter B tell you to play? \_\_\_\_\_

What are the dots below the notes at letter C called? \_\_\_\_\_

How do the dots below the notes at letter C tell you to play? \_\_\_\_\_

The piece should be played a. soft. b. medium soft. c. medium loud. d. loud. (Circle one.)

What is the circled interval at letter D? (Give its number.) \_\_\_\_\_

Is the circled interval at letter D melodic or harmonic? \_\_\_\_\_

What does the circled symbol at letter E tell you? \_\_\_\_\_