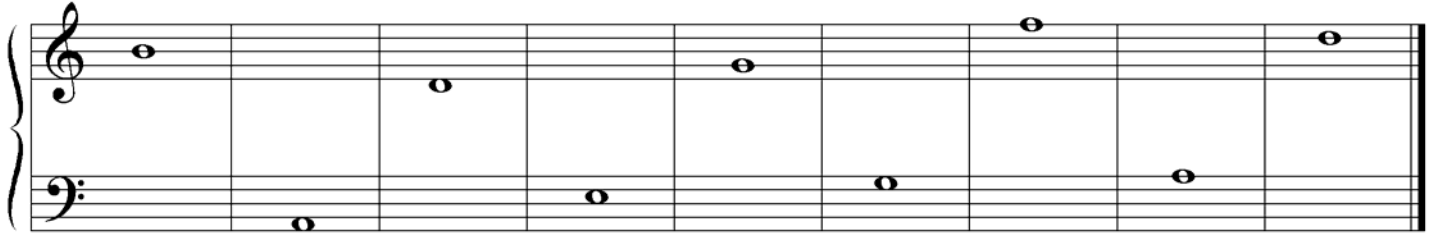




Late Elementary 2007

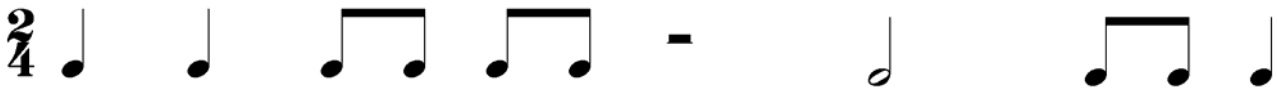
1. Name these notes.



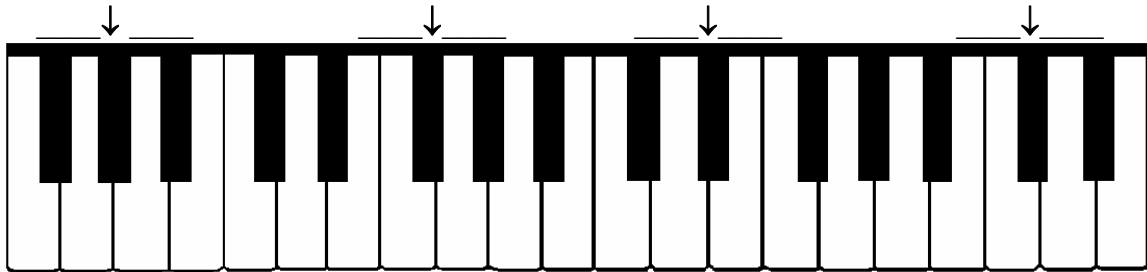
2. Write counting under every note and rest.



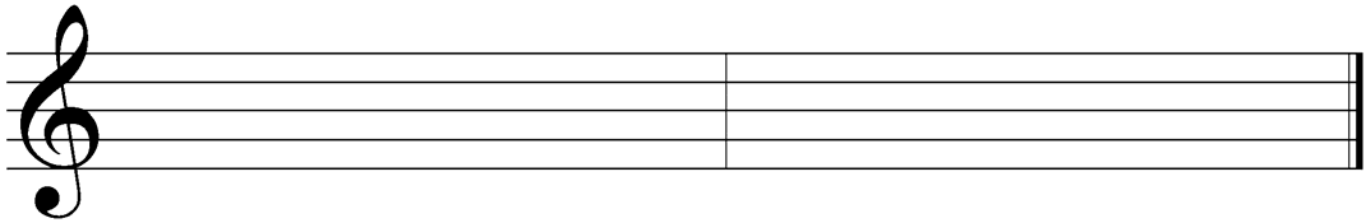
Draw bar lines. Remember the kind of bar line that goes at the end.



3. Write two names for each black key that has an arrow pointing to it.



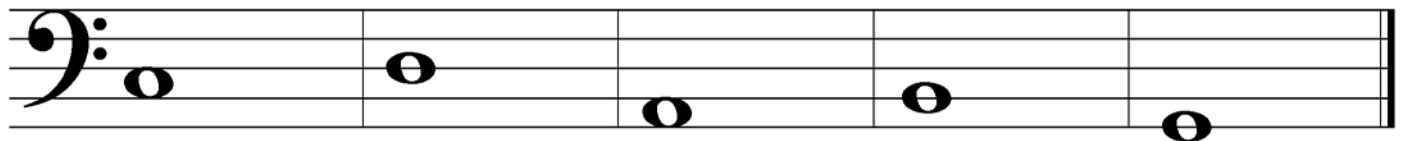
4. Draw **G major** and **A harmonic minor scales**, going up only. Use **whole notes** and draw sharps or flats before the notes that need them. Do **not** draw key signatures.



G major scale

A harmonic minor scale

5. Draw a **harmonic or melodic interval above** the given note. Use **whole notes**.



Melodic 2nd

Melodic 4th

Harmonic 5th

Harmonic 3rd


Harmonic 6th

6. Match the following. Not all of the answers will be used.

___ dynamics

___ legato


___ tie

___ 

___ *mp*

___ triad

___ interval

___ 

___ 

___ #

1. slow

2. the distance between two notes

3. a sharp

4. a flat

5. a curved line telling you to play the notes legato

6. a curved line telling you not to re-strike the second note

7. moderately soft

8. moderately loud

9. smooth and connected

10. getting louder

11. getting softer

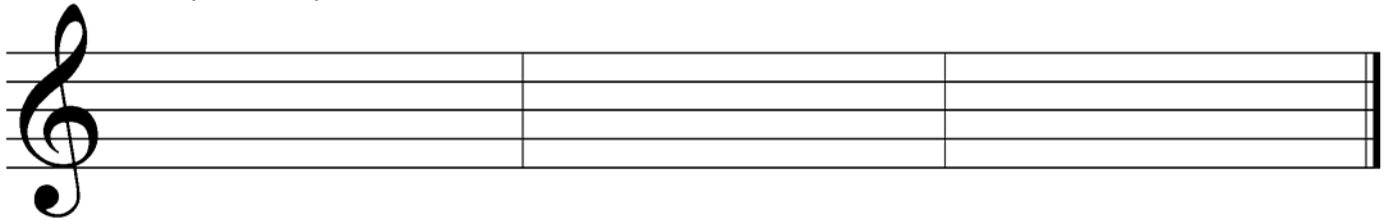
12. a three-note chord made of thirds

13. a half rest

14. a whole rest

15. instructions that tell you how loud or soft to play

7. Draw C major, F major and A minor **blocked** triads. Use **whole notes**.



C major triad

F major triad

A minor triad



The image shows a piano score with two staves. The treble staff has notes A, B, and E. The bass staff has notes C and D. Annotations include: A (circled interval between A and B), B (dots below notes B and C), C (circled interval between C and D), D (flat symbol before note D), E (curved line under notes E and F), and F (circled repeat sign at the end).

What is the circled interval at letter **A**? (Give the number.) _____

What is the circled interval at letter **C**? _____

What are the dots below the notes at letter **B** called? _____

What do the dots below the notes at letter **B** tell you to do? _____

What is the symbol (b) in front of the note at letter **D** called? _____

What is the curved line at letter **E** called? _____

What does the curved line at letter **E** tell you to do? _____

Should the piece be played loud, medium loud, medium soft, or soft? _____

The time signature for this piece should be a. **2** b. **3** c. **4** (Circle one.)
4 4 4

What does the circled symbol at letter **F** tell you to do? _____