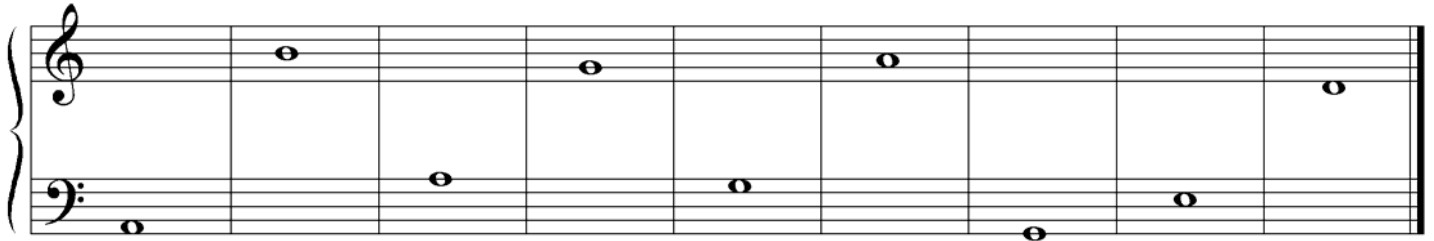


# Late Elementary Theory Test

## 2006

1. Name these notes.



\_\_\_\_\_

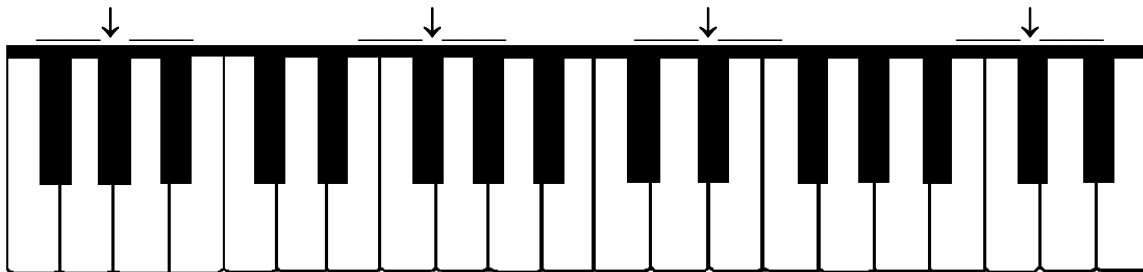
2. Write counting under every note and rest.



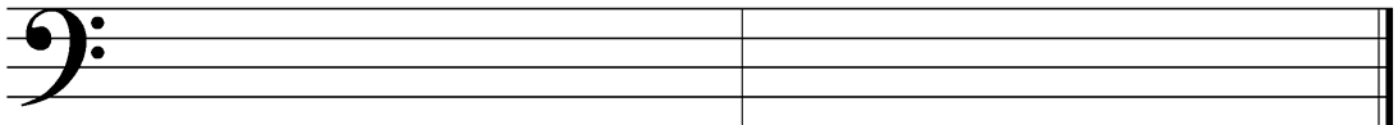
Draw bar lines. Remember the kind of bar line that goes at the end.



3. Write two names for each black key that has an arrow pointing to it.



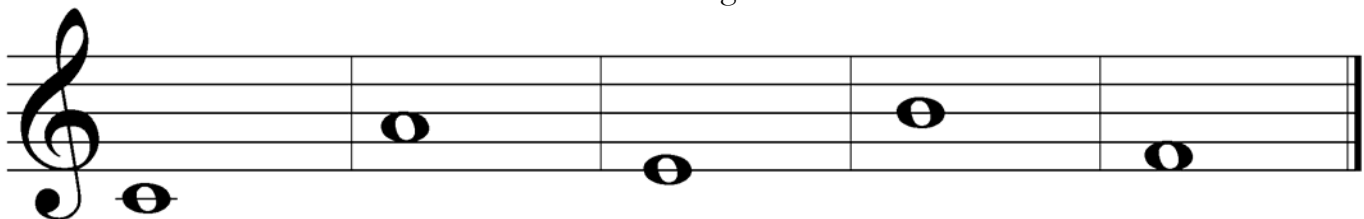
4. Draw **F major** and **A harmonic minor scales**, going up only. Use whole notes and draw sharps or flats before the notes that need them. Do **not** draw key signatures.



F major scale

A harmonic minor scale

5. Draw a *harmonic or melodic* interval *above* the given note. Use whole notes.



Melodic 6<sup>th</sup>

Melodic 3<sup>rd</sup>

Harmonic 2<sup>nd</sup>

Harmonic 5<sup>th</sup>


Harmonic 4<sup>th</sup>

6. Match the following. Not all of the answers will be used.

\_\_\_ triad

\_\_\_ legato

\_\_\_ *mf*

\_\_\_ 

\_\_\_ slur

\_\_\_ dynamics

\_\_\_ interval

\_\_\_ 

\_\_\_ 

\_\_\_ 

1. slow

2. a three-note chord

3. instructions that tell you how loud or soft to play

4. a flat

5. a curved line telling you to play the notes legato

6. a curved line telling you to not to re-strike the second note

7. moderately soft

8. moderately loud

9. smooth and connected

10. getting louder

11. getting softer

12. the distance between two notes

13. rest for one measure

14. rest for two beats

15. a sharp

7. Draw G major, C major and A minor **blocked** triads. Use whole notes.



G major triad

C major triad

A minor triad

What is the curved line at letter **A** called? \_\_\_\_\_


What does the curved line at letter **A** tell you to do? \_\_\_\_\_

What are the dots below the notes at letter **B** called? \_\_\_\_\_

What do the dots below the notes at letter **B** tell you to do? \_\_\_\_\_

What is the circled interval at letter **C**? \_\_\_\_\_

What is the circled interval at letter **D**? \_\_\_\_\_

What does the sign at letter **E** () tell you to do? \_\_\_\_\_

Should the piece begin loud, medium loud, medium soft, or soft? \_\_\_\_\_

The time signature for this piece should be a. 2/4 b. 3/4 c. 4/4 (Circle one.)

What does the circled symbol at letter **F** tell you? \_\_\_\_\_