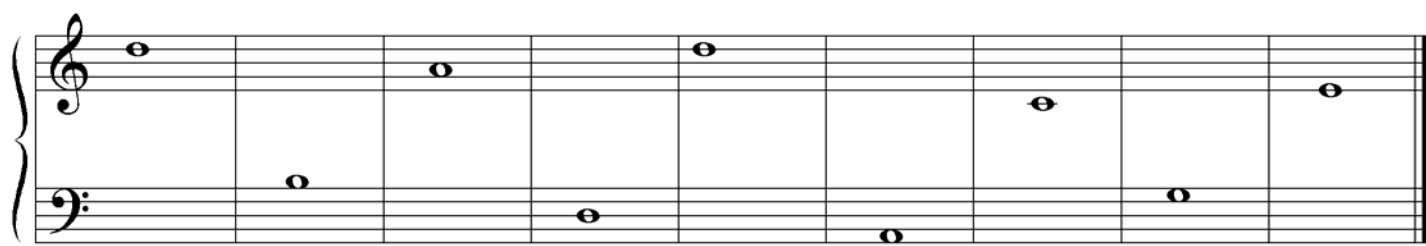


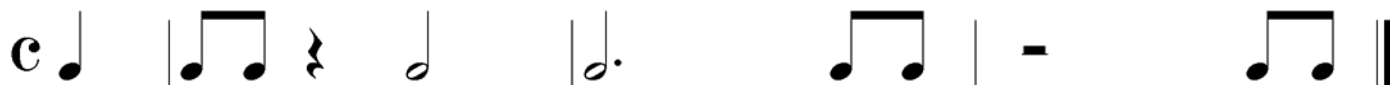
Late Elementary Theory Test

2005

1. Name these notes.



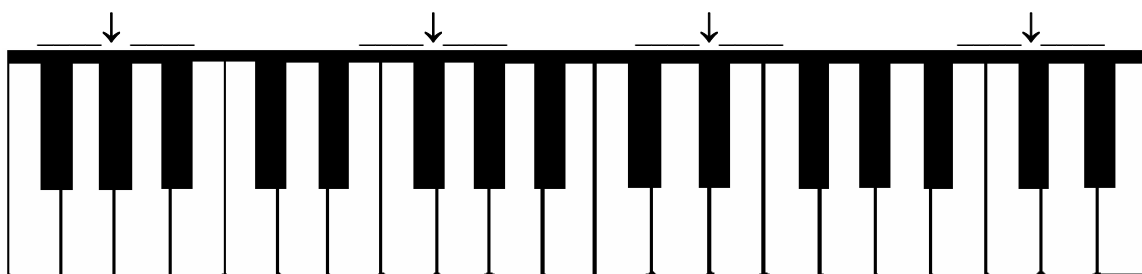
2. Write counting under every note and rest.



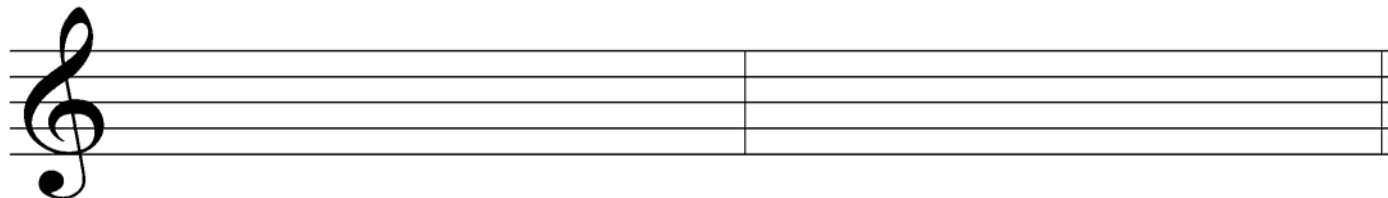
Draw bar lines. Remember what kind of bar line goes at the end.



3. Write two names for each black key that has an arrow pointing to it.



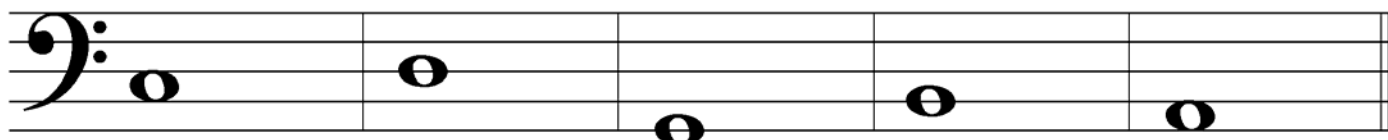
4. Draw **G Major** and **A harmonic minor scales**, going up only. Use whole notes and draw sharps or flats before the notes that need them. Do **not** draw key signatures.



G Major scale

A harmonic minor scale

5. Draw a *harmonic or melodic* interval *above* the given note. Use whole notes.



Melodic 2nd

Melodic 5th

Harmonic 3rd

Harmonic 4th

Harmonic 6th

