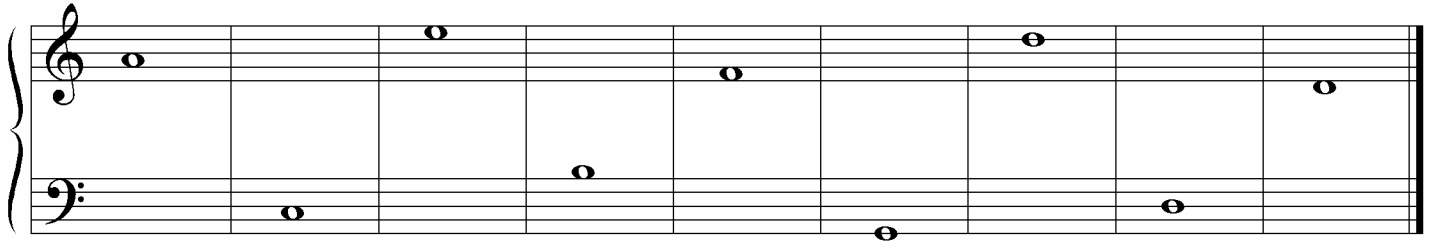


# Late Elementary Theory Test

## 2004

1. Name these notes.



\_\_\_\_\_

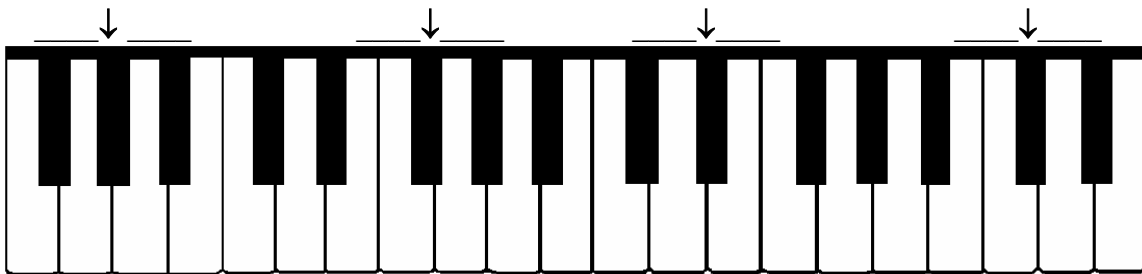
2. Write counting under every note and rest.



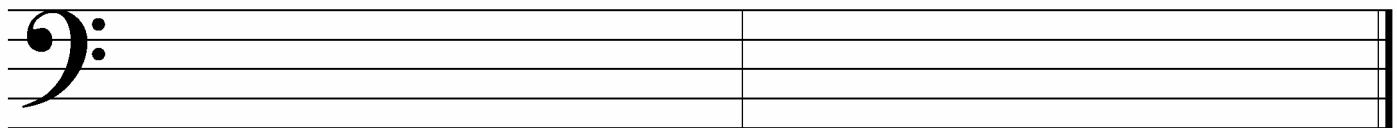
Draw bar lines. Remember what kind of bar line goes at the end.



3. Write two names for each black key that has an arrow pointing to it.



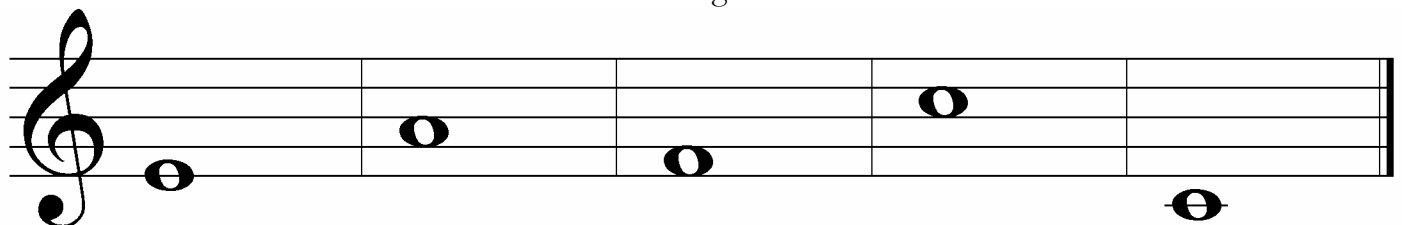
4. Draw **F Major** and **A harmonic minor scales**, going up only. Use whole notes and draw sharps or flats before the notes that need them. Do **not** use key signatures.



A Harmonic Minor scale

G Major scale

5. Draw a *harmonic or melodic* interval *above* the given note. Use whole notes.



Melodic 6<sup>th</sup>

Melodic 4<sup>th</sup>

Harmonic 2<sup>nd</sup>

Harmonic 3<sup>rd</sup>


Harmonic 5<sup>th</sup>

6. Match the following. Not all of the answers will be used.

\_\_\_ staccato

\_\_\_ interval

\_\_\_ *mp*

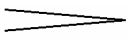
\_\_\_ 

\_\_\_ slur

\_\_\_ triad

\_\_\_ dynamics

\_\_\_ 

\_\_\_ 

\_\_\_ *b*

1. repeat sign

2. a three-note chord

3. instructions that tell you how loud or soft to play

4. flat

5. curved line telling you to play the notes legato

6. curved line telling you to not to re-strike the second note

7. moderately soft

8. moderately loud

9. short, not connected

10. getting softer

11. getting louder

12. the distance between two notes

13. rest for one measure

14. rest for two beats

15. sharp

7. Draw F Major, G Major and A Minor **blocked** triads. Use whole notes.



F Major triad

G Major triad

A Minor triad

What is the curved line at letter **A** called? \_\_\_\_\_

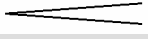
What does the curved line at letter **A** tell you to do? \_\_\_\_\_

What is the curved line at letter **B** called? \_\_\_\_\_

What does the curved line at letter **B** tell you to do? \_\_\_\_\_

What is the circled interval at letter **C**? \_\_\_\_\_

What is the circled interval at letter **D**? \_\_\_\_\_

What does the sign at letter **E** (  ) tell you to do? \_\_\_\_\_

Should the piece begin loud, medium loud, medium soft, or soft? \_\_\_\_\_

The first measure (letter **F**) has only one beat, even though the time signature is 4/4. What is that type of beat called? \_\_\_\_\_

What does the circled symbol at letter **G** tell you? \_\_\_\_\_