



Early Elementary 2010

1. Name the notes.

A musical staff with a treble clef on the top line and a bass clef on the bottom line. The treble clef staff contains notes on the 1st, 3rd, 4th, and 5th lines. The bass clef staff contains notes on the 1st, 2nd, 3rd, and 4th lines. There are ten measures in total, with notes in every other measure.

2. Write counting under every note.

3/4 time signature. The first measure contains three quarter notes. The second measure contains a half note and a quarter note. The piece ends with a double bar line.

Add bar lines to this rhythm. Remember the kind of bar line that goes at the end.

4/4 time signature. The first measure contains a dotted half note. The second measure contains two quarter notes. The third measure contains two quarter notes. The fourth measure contains a whole note.

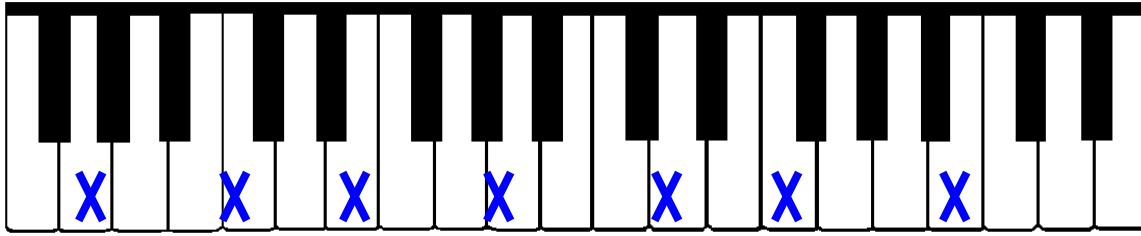
3. Write the music alphabet **forward** starting with **E**.

E _____

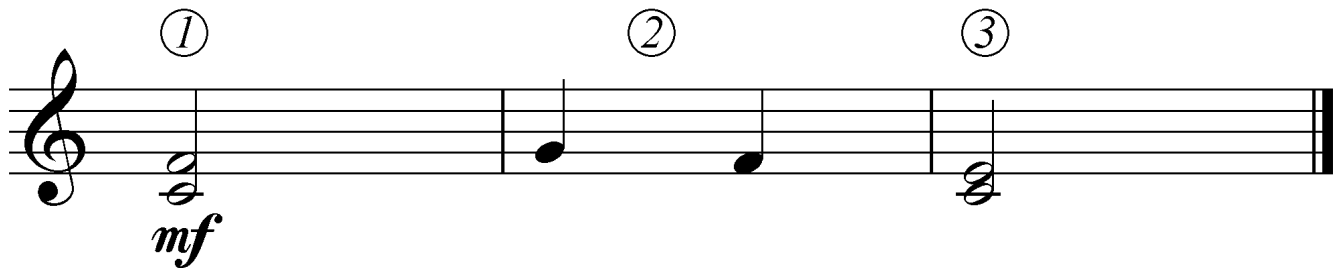
Write the music alphabet **backward** starting with **B**.

B _____

4. Name each key that has an X on it.



5. Answer the questions about this example.



What is the interval in measure 1?
(Circle one answer.)

- a. 2nd b. 3rd c. 4th d. 5th

What is the interval in measure 2?

- a. 2nd b. 3rd c. 4th d. 5th

What is the interval in measure 3?

- a. 2nd b. 3rd c. 4th d. 5th

How should the piece be played? (Circle one answer.)

- a. soft b. medium soft c. medium loud d. loud

What should the time signature be? (Circle one answer.)

- a. 2/4 b. 3/4 c. 4/4