

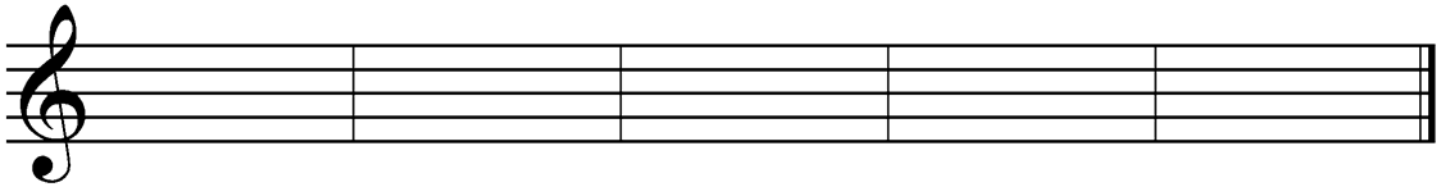


5. Complete this table listing four style periods of music, their dates, and three composers from each period. Use the following composers:

**Schumann, Stravinsky, Scarlatti, Handel, Bach,  
Haydn, Copland, Beethoven, Brahms, Chopin**

<b>Period:</b>	Baroque			
<b>Years:</b>			1820-1900	
<b>Composers:</b>		Mozart		Schoenberg

6. Draw these **blocked triads**. Use **whole notes** and **accidentals**. Do *not* draw key signatures.



**B diminished**

**A-flat major**

**D augmented**

**A-flat minor**

**F-sharp diminished**

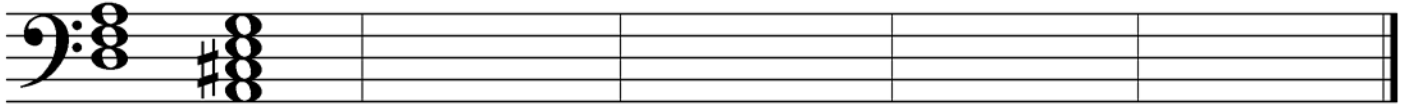
7. Match the following. Not all answers will be used.

- \_\_\_ *maestoso*
- \_\_\_ *cadenza*
- \_\_\_ *sostenuto pedal*
- \_\_\_ *sequence*
- \_\_\_ *presto*
- \_\_\_ *poco*
- \_\_\_ *leading tone*
- \_\_\_ *tonic*
- \_\_\_ *subdominant*
- \_\_\_ *simile*
- \_\_\_ *con*
- \_\_\_ *più mosso*
- \_\_\_ *meno mosso*
- \_\_\_ *allegretto*

1. becoming slower (less motion)
2. becoming faster (more motion)
3. majestic
4. the 1<sup>st</sup> degree of the major or minor scale
5. the 4<sup>th</sup> degree of the major or minor scale
6. the 7<sup>th</sup> degree of the major or harmonic minor scale
7. quick, fast (faster than *allegro*)
8. the conclusion or punctuation point in a musical phrase
9. continue in the same manner
10. same pattern repeated at a different pitch level
11. a little
12. the right pedal
13. the middle pedal
14. much, very
15. a virtuoso passage near the end of a concerto or aria
16. with
17. without
18. a little quick and lively

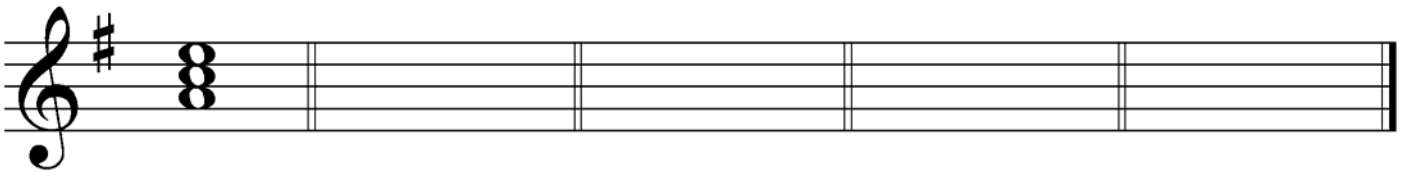
8. Draw **tonic and dominant seventh chords in root position** in these keys.

Use **whole notes** and **accidentals**, *not* key signatures.



Ex. **i** **V<sup>7</sup>** **I** **V<sup>7</sup>** **i** **V<sup>7</sup>** **I** **V<sup>7</sup>** **i** **V<sup>7</sup>**  
 D *harmonic* minor      A major      F *harmonic* minor      D-flat major      C-sharp *harmonic* minor

9. Draw the **key signature** for the given key and the requested **triad** (in **root position**).



Ex. G major: **ii**      A-flat major: **IV**      B major: **iii**      B-flat major: **V**      C major: **vi**

Provide a Roman numeral analysis of this musical example on the lines provided. Name the key, then write Roman numerals for the harmonies with lines beneath. (There is one harmony per bar.) Use Arabic numbers (figured bass) to indicate inversions where necessary. Answer the questions.

**Poco allegro**

Key: \_\_\_\_\_

Define "Poco allegro". \_\_\_\_\_

Define "leggiero". \_\_\_\_\_

Name the circled interval at letter **A**. Give its quality (major, minor or perfect) and number. \_\_\_\_\_

What is the scale degree name of the circled note at letter **B** (for example, tonic, subdominant)?

\_\_\_\_\_

What should the time signature be? \_\_\_\_\_