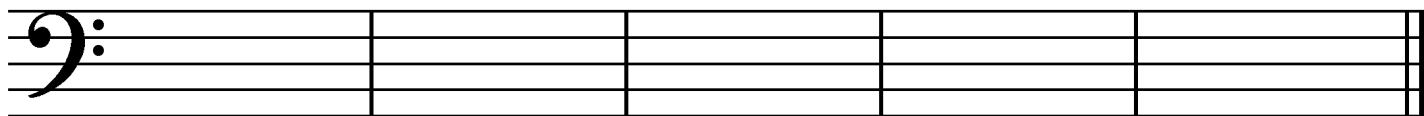


5. Draw these **blocked triads** in **root position**. Use **whole notes** and **accidentals**. Do *not* draw key signatures.



D-flat major

B-flat major

G minor

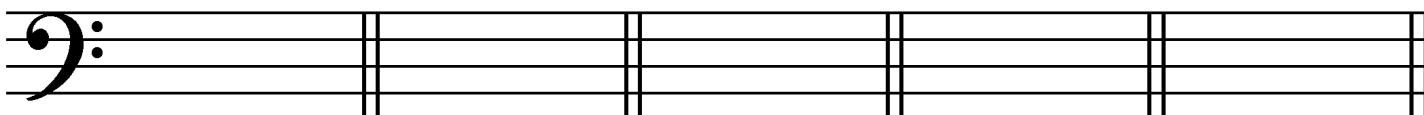
C-sharp minor

B minor

6. Identify these **intervals** by **quality and number** (for example, "maj. 3"). Use **Maj.** for major, **min.** for minor and **P** for perfect.



7. Draw **key signatures** for these **major and minor keys**.



C-flat major

A major

B-flat major

F-sharp minor

C minor

Adagio

In what key is this example? (Give the letter name and major or minor.) _____

What does "**sfz**" mean? (Answer in English.) _____

Define the tempo marking. _____

Identify the triad at letter **A** by its letter name and quality (major or minor). _____

In what position (root, 1st inversion or 2nd inversion) is the triad at letter **A**? _____

Identify the triad at letter **B** by its letter name and quality (major or minor). _____

In what position (root, 1st inversion or 2nd inversion) is the triad at letter **B**? _____

Identify the triad at letter **C** by its letter name and quality (major or minor). _____

In what position (root, 1st inversion or 2nd inversion) is the triad at letter **C**? _____

Identify the interval at letter **D** by quality and number (e.g., Maj. 6). _____

Identify the interval at letter **E** by quality and number. _____

Is the interval at letter **E** a harmonic or melodic interval? _____