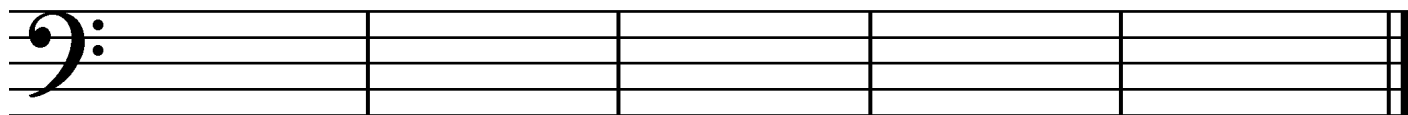




5. Draw these *blocked triads* in *root position*. Use *whole notes* and *accidentals*. Do **not** draw key signatures.



F-sharp major

B-flat major

E minor

C-sharp minor

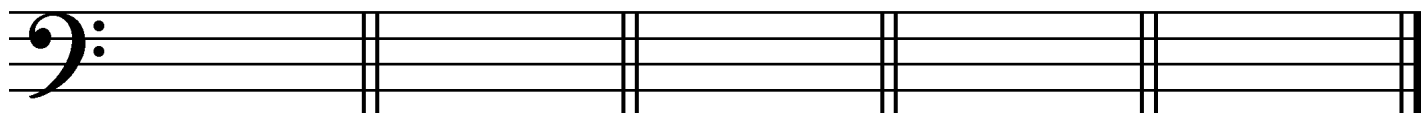
C minor

6. Identify these *intervals* by *quality and number* (for example, “min. 7”). Use *Maj.* for major, *min.* for minor and *P* for perfect.



\_\_\_\_\_

7. Draw *key signatures* for these keys.



F major

A major

G-flat major

B minor

F minor

**Allegro moderato**

*cantabile*

In what *major* key is this example? \_\_\_\_\_

What does “*cantabile*” mean? \_\_\_\_\_

What does “*Allegro moderato*” mean? \_\_\_\_\_

Identify the triad at letter **A** by its letter name and quality (major or minor). \_\_\_\_\_

In what position (root, 1<sup>st</sup> inversion or 2<sup>nd</sup> inversion) is the triad at letter **A**? \_\_\_\_\_

Identify the triad at letter **B** by its letter name and quality (major or minor). \_\_\_\_\_

In what position (root, 1<sup>st</sup> inversion or 2<sup>nd</sup> inversion) is the triad at letter **B**? \_\_\_\_\_

Identify the triad at letter **C** by its letter name and quality (major or minor). \_\_\_\_\_

In what position (root, 1<sup>st</sup> inversion or 2<sup>nd</sup> inversion) is the triad at letter **C**? \_\_\_\_\_

Identify the interval at letter **D** by quality and number (e.g., Maj. 6). \_\_\_\_\_

Identify the interval at letter **E** by quality and number. \_\_\_\_\_

Is the interval at letter **E** a harmonic or melodic interval? \_\_\_\_\_