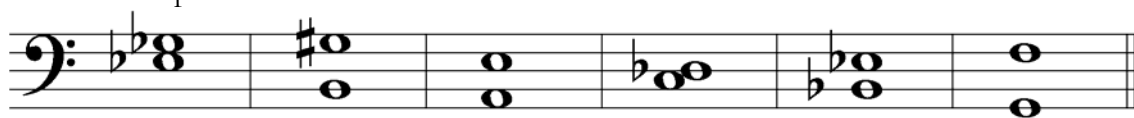


5. Draw these **blocked triads** in **root position**. Use whole notes and accidentals. Do **not** draw key signatures.

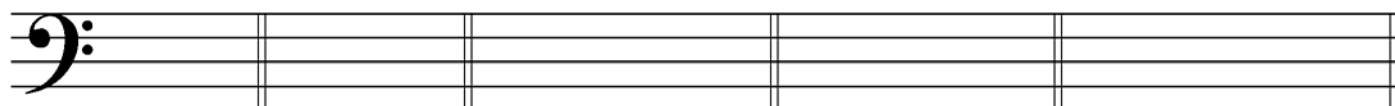


B Major **A-flat Major** **B-flat Major** **f-sharp minor** **g minor**

6. Identify these **intervals** by quality and number (for example, “min. 7”). Use **Maj.** for major, **min.** for minor and **P** for perfect.



7. Draw key signatures for these keys.



b minor **f minor** **D-flat Major** **E Major** **C# Major**

Adagio

In what minor key is this example? _____

Give the definition of the tempo marking. _____

Identify the triad at letter **A** by its letter name and quality (major or minor). _____

In what position (root, 1st inversion or 2nd inversion) is the triad at letter **A**? _____

Identify the triad at letter **B** by its letter name and quality (major or minor). _____

In what position (root, 1st inversion or 2nd inversion) is the triad at letter **B**? _____

Identify the triad at letter **C** by its letter name and quality (major or minor). _____

In what position (root, 1st inversion or 2nd inversion) is the triad at letter **C**? _____

What is the name of the symbol (the line above the note) at letter **D**? _____

Identify the interval at letter **E** by quality and number (e.g., Maj. 6). _____

Identify the interval at letter **F** by quality and number. _____

Is the interval at letter **F** a harmonic or melodic interval? _____